

Automatic gas valve - Brass Body

» Automatic gas solenoid valves are used for safety and control of gas for shut-off in gas feed pipes. Suitable for various gasses, including Natural gas, Propane and LPG Gas solenoid valve normally closed solenoid that open automatically when the coil is powered and close automatically when there is no tension.

Automatic gas valve - Brass Body

AUTOMATIC GAS SOLENOID VALVE 1/2", 3/4"
BRASS BODY - PMAX 200 MBAR

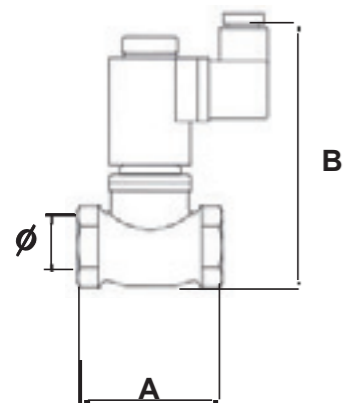
p. 76

Automatic gas solenoid valve 1/2", 3/4" - Brass Body - pmax 200 mbar



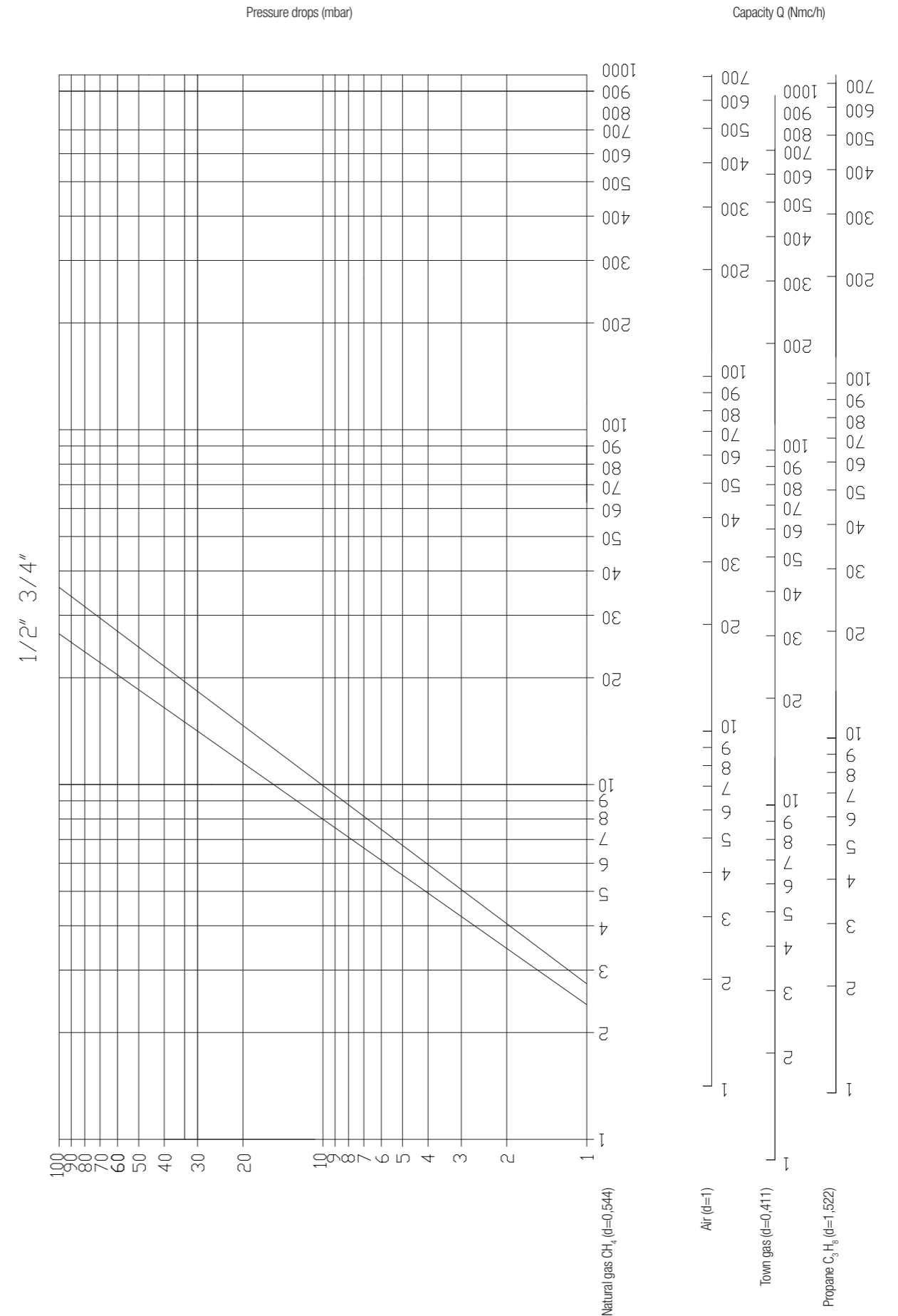
Type	Connections	Flow (m³/h)	Max pressure
AV015	1/2"	4,5	200 mbar
AV020	3/4"	6	200 mbar

DIMENSIONS (mm) and WEIGHT (kgs)			
Dimension	A	B	Ø
AV015	59	107	DN15 - 1/2"
AV020	59	107	DN20 - 3/4"



Dimension	1/2"	3/4"
WEIGHT (kgs)	0,8	0,8

TECHNICAL FEATURES	
Pmax	200 mbar
Inlet connection - outlet	Thread gas 1/2" 3/4" and 1" - ISO 228
Opening time	<1 second
Closing time	<1 second
Max number of operations	30 per minute
Supply voltage	230V (-15%+10%) 50-60Hz 110V (-15%+10%) 50-60Hz 24Vdc (-15%+10%) 50-60Hz
Power	15 VA Coils to class F copper wire class H
Use	Non - aggressive gases - Family 1 - 2 - 3 and air
Working Temperature	- 20 °C - 60 °C
Approval	EN161
Protection degree	IP65
Materials:	
Complete Body	Brass ST-CW617N - EN 12420 - Yellow Painted



Automatic Gas Valves -Pmax 360 mbar

» Automatic gas solenoid valves are used for safety and control of gas for shut-off in gas feed pipes. Suitable for various gasses, including Natural gas, Propane and LPG Gas solenoid valve normally closed solenoid that open automatically when the coil is powered and close automatically when there is no tension.

Automatic Gas Valves

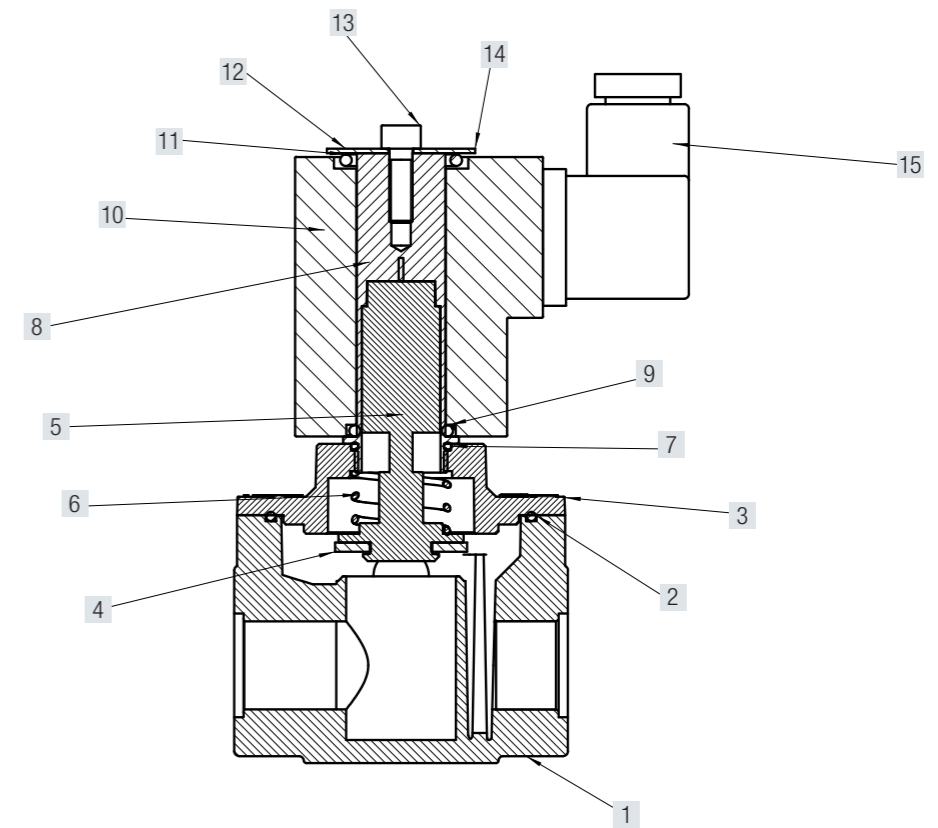
AUTOMATIC GAS VALVES Fast Opening / Fast Closing p. 80
1/2", 3/4" and 1" – 360 mbar

AUTOMATIC GAS VALVES Fast Opening / Fast Closing p. 82
1 1/4", 1 1/2" and 2" – 360 mbar

AUTOMATIC GAS VALVES Fast Opening / Fast Closing p. 84
DN65, DN80, DN100 – 360 mbar



AUTOMATIC GAS VALVES Fast Opening / Fast Closing
1/2", 3/4" and 1" – Pmax 360 mbar



Code	Description	Dimension	Pmax
AV015FO	Gas valve fast opening	1/2"	360 mbar
AV020FO	Gas valve fast opening	3/4"	360 mbar
AV025FO	Gas valve fast opening	1"	360 mbar
AVD25FO	Gas valve fast opening	DN25	360 mbar
AV015FO-FR	Gas valve fast opening Flow regulation	1/2"	360 mbar
AV020FO-FR	Gas valve fast opening Flow regulation	3/4"	360 mbar
AV025FO-FR	Gas valve fast opening Flow regulation	1"	360 mbar
AVD25FO-FR	Gas valve fast opening Flow regulation	DN25	360 mbar
CPI-1	Control position indicator		

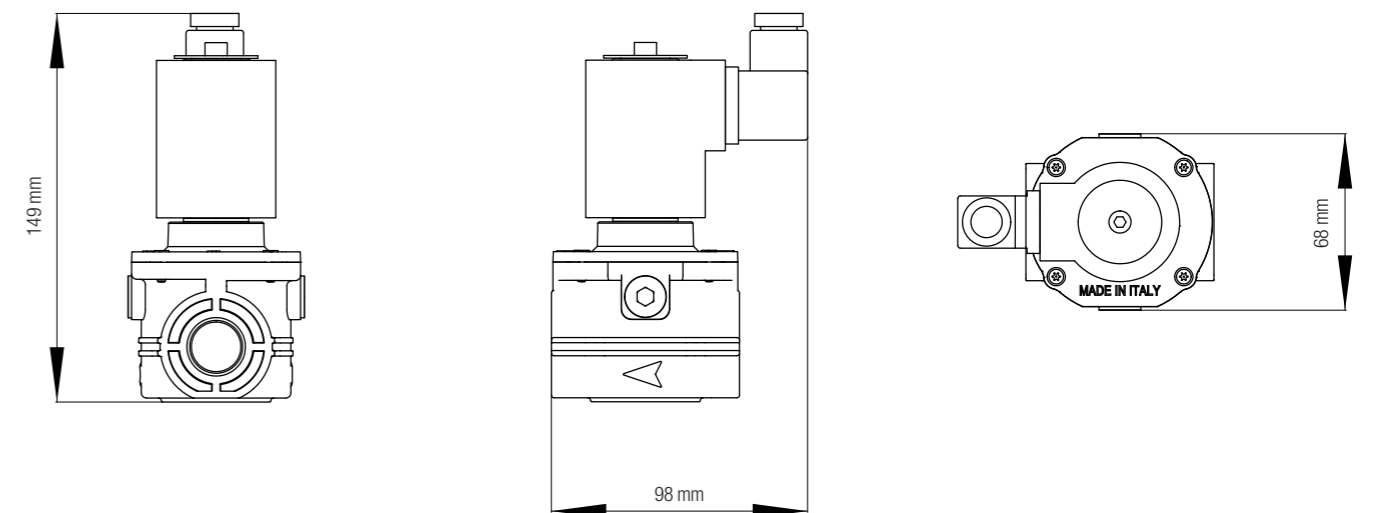
TECHNICAL FEATURES

Pmax	360 mbar
Inlet connection - outlet	Thread gas 1/2" 3/4" and 1" - ISO 228 DN25 - Sliding Aluminium flange PN10
Opening time	<1 second
Closing time	<1 second
Max number of operations	20 per minute
	Incorporated AISI 303 steel mesh filter on request
Supply voltage	230V (-15%+10%) 50-60Hz 110V (-15%+10%) 50-60Hz 24Vdc (-15%+10%) 50-60Hz
Power	15 VA Coils to class F copper wire class H
Use	Non - aggressive gases - Family 1 - 2 - 3 and air
Test point	3 connections Screw 1/4" NPT
Working Temperature	- 20 °C - 60 °C
Approval	EN161
Protection degree	IP65

Materials:

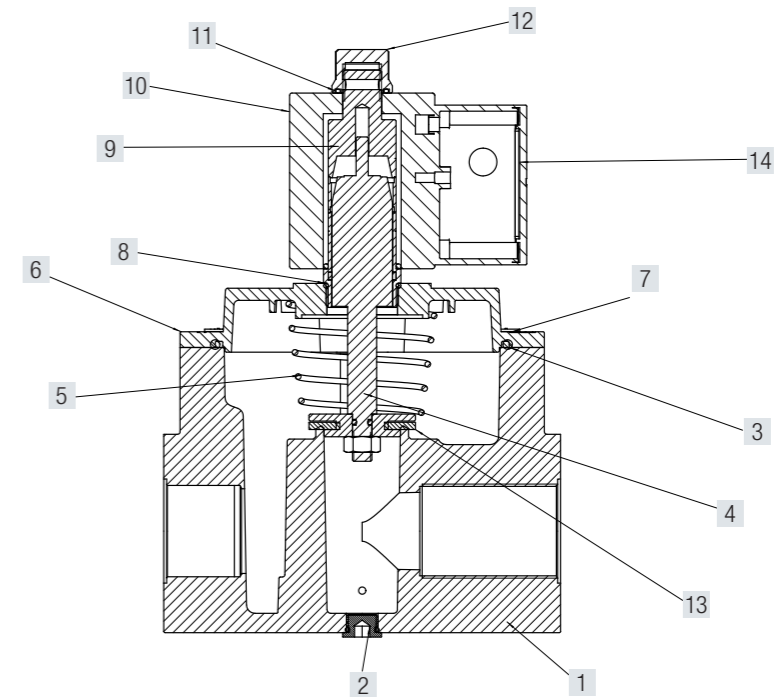
Complete Body	Die - Cast Aluminium Gd - AISi12Cu - EN AB 46100
----------------------	--

1	Body	9	O-Ring
2	O-Ring	10	Coil
3	Cover	11	O-Ring
4	Gasket	12	Washer
5	Plunger	13	Screw
6	Spring	14	Washer
7	O-Ring	15	Connector
8	Pilot		



Dimension	1/2"	3/4"	1"
WEIGHT (kgs)	0,8	0,8	0,8

AUTOMATIC GAS VALVES Fast Opening / Fast Closing
1 ¼", 1 ½" and 2" – Pmax 360 mbar



Code	Description	Dimension	Pmax
AV032FO	Gas valve fast opening	1 ¼"	360 mbar
AV040FO	Gas valve fast opening	1 ½"	360 mbar
AV050FO	Gas valve fast opening	2"	360 mbar
AVD32FO	Gas valve fast opening	DN32	360 mbar
AVD40FO	Gas valve fast opening	DN40	360 mbar
AVD50FO	Gas valve fast opening	DN50	360 mbar

AV032FO-FR	Gas valve fast opening Flow regulation	1 ¼"	360 mbar
AV040FO-FR	Gas valve fast opening Flow regulation	1 ½"	360 mbar
AV050FO-FR	Gas valve fast opening Flow regulation	2"	360 mbar
AVD32FO-FR	Gas valve fast opening Flow regulation	DN32	360 mbar
AVD40FO-FR	Gas valve fast opening Flow regulation	DN40	360 mbar
AVD50FO-FR	Gas valve fast opening Flow regulation	DN50	360 mbar

CPI-2	Control position indicator
-------	----------------------------

TECHNICAL FEATURES

Pmax 360 mbar

Inlet connection -outlet Thread gas 1 ¼", 1 ½" and 2" - ISO 228
 DN32 DN40 DN50 - Sliding Aluminium flange PN10

Opening time <1 second
Closing time <1 second

Max number of operations 20 per minute

Incorporated AISI 303 steel mesh filter on request

Supply voltage 230V (-15%+10%) 50-60Hz
 110V (-15%+10%) 50-60Hz
 24Vdc (-15%+10%) 50-60Hz

Power 230Vac1
 1/4"-11/2"-PeakPower40W- Maintain power4W
 2"-Peakpower130W- Maintain power 1,5W
 Coils to class F copper wire class H

Use Non – aggressive gases – Family 1 – 2 – 3 and air

Test point 5 connections
 Screw ¼" NPT

Working Temperature - 20 °C – 60 °C

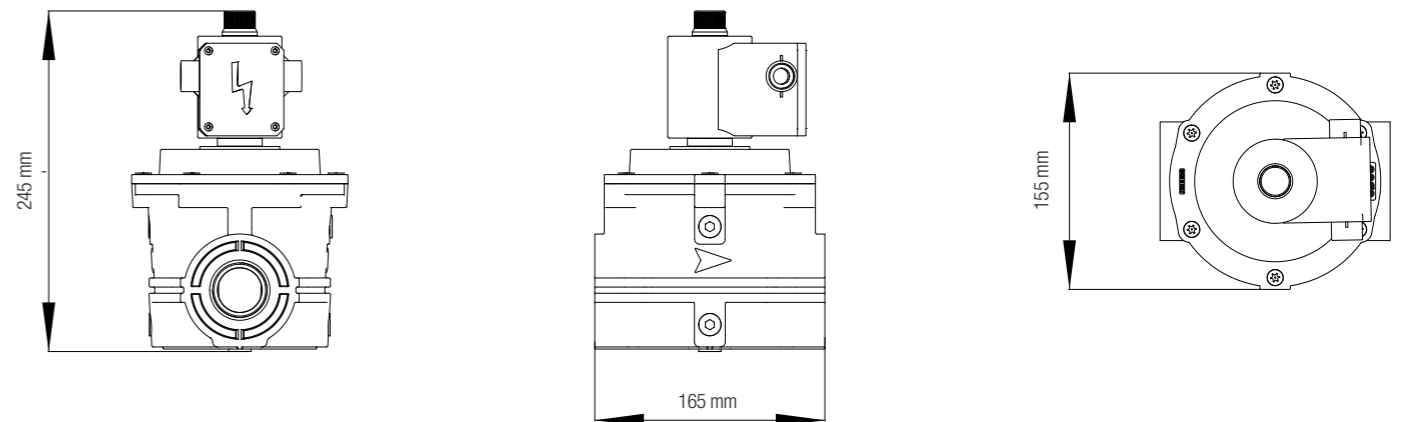
Approval EN161

Protection degree IP65

Materials:

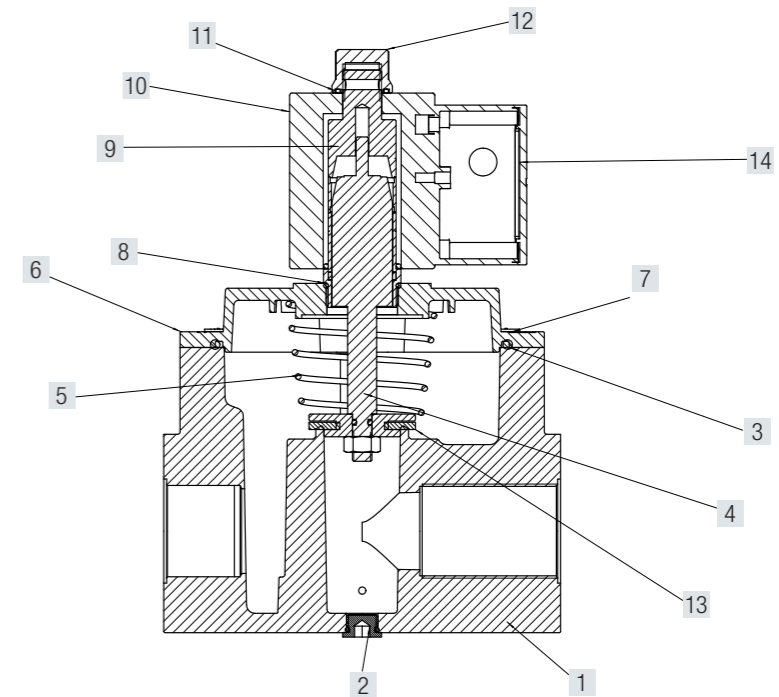
Complete Body Die – Cast Aluminium Gd – AISi12Cu - EN AB 46100

- | | | | |
|---|-------------|----|--------------|
| 1 | Body | 8 | O-Ring |
| 2 | Screw Plugs | 9 | Pilot |
| 3 | O-Ring | 10 | Coil |
| 4 | Plunger | 11 | O-Ring |
| 5 | Spring | 12 | Locking Ring |
| 6 | Cover | 13 | Gasket |
| 7 | Screw | 14 | Connector |



Dimension	1 ¼"	1 ½"	2"
WEIGHT (kgs)	4,2	4,2	4,6

AUTOMATIC GAS VALVES Fast Opening / Fast Closing - Coil encapsulated with fibre-glass reinforced polyamide 1 ¼", 1 ½" – Pmax 360 mbar



Code	Description	Dimension	Pmax
AV032FO-EC	Gas valve fast opening	1 ¼"	360 mbar
AV040FO-EC	Gas valve fast opening	1 ½"	360 mbar
AVD32FO-EC	Gas valve fast opening	DN32	360 mbar
AVD40FO-EC	Gas valve fast opening	DN40	360 mbar
CPI-2	Control position indicator		

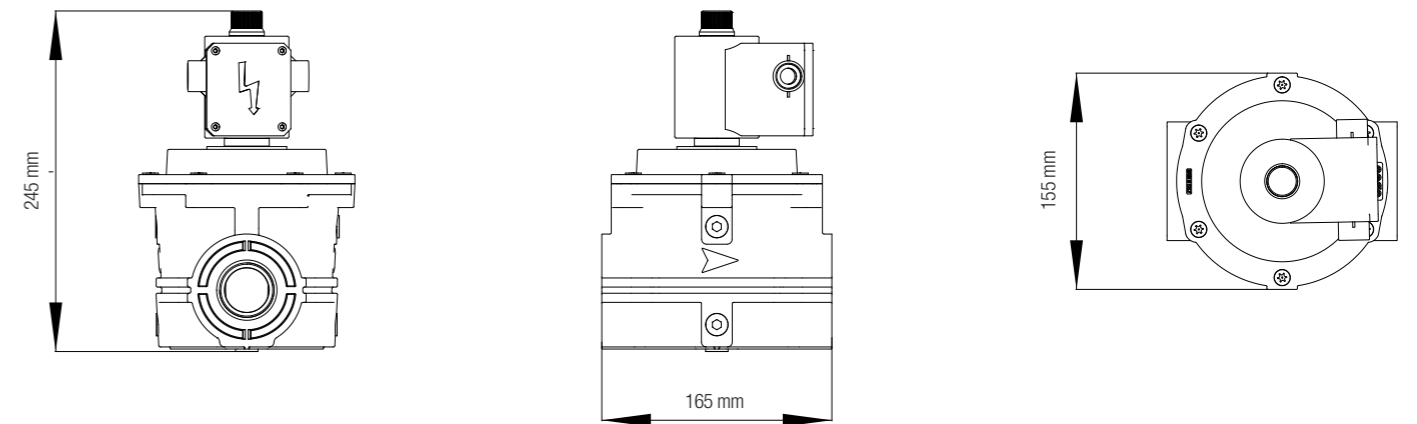
TECHNICAL FEATURES

Pmax	360 mbar
Inlet connection -outlet	Thread gas 1 ¼", 1 ½" - ISO 228 DN32 DN40 - Sliding Aluminium flange PN10
Opening time	<1 second
Closing time	<1 second
Max number of operations	20 per minute
Incorporated AISI 303 steel mesh filter on request	
Supply voltage	230V (-15%+10%) 50-60Hz
Power	37W Coils to class F copper wire class H
Use	Non – aggressive gases – Family 1 – 2 – 3 and air
Test point	5 connections Screw ¼" NPT
Working Temperature	- 20 °C – 60 °C
Approval	EN161
Protection degree	IP65

Materials:

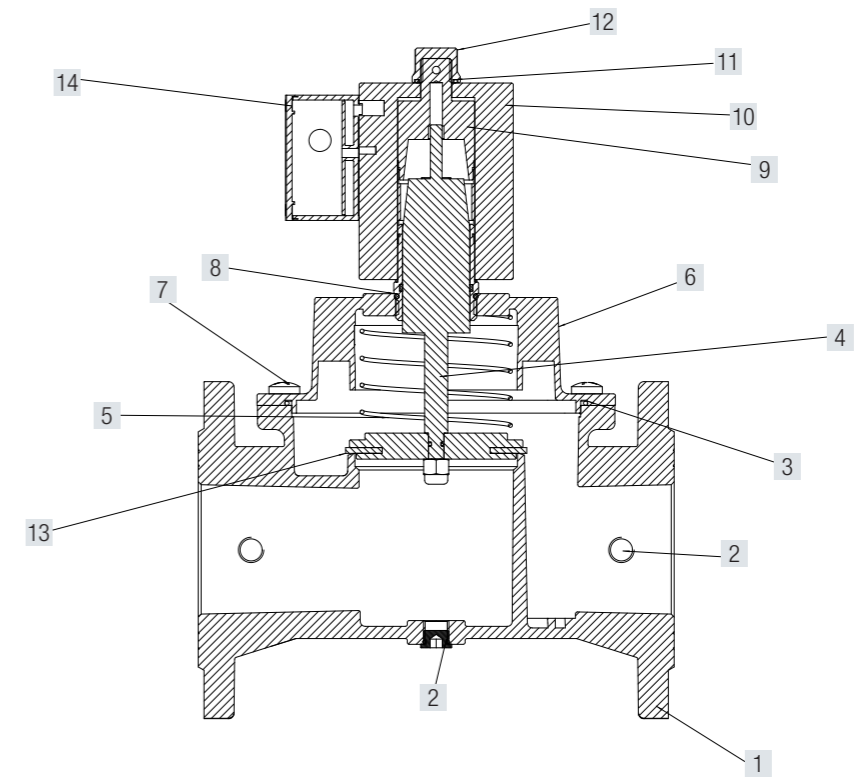
Complete Body	Die – Cast Aluminium Gd – AISI12Cu - EN AB 46100
----------------------	--

1	Body	8	O-Ring
2	Screw Plugs	9	Pilot
3	O-Ring	10	Coil
4	Plunger	11	O-Ring
5	Spring	12	Locking Ring
6	Cover	13	Gasket
7	Screw	14	Connector



Dimension	1 ¼"	1 ½"
WEIGHT (kgs)	4,0	4,0

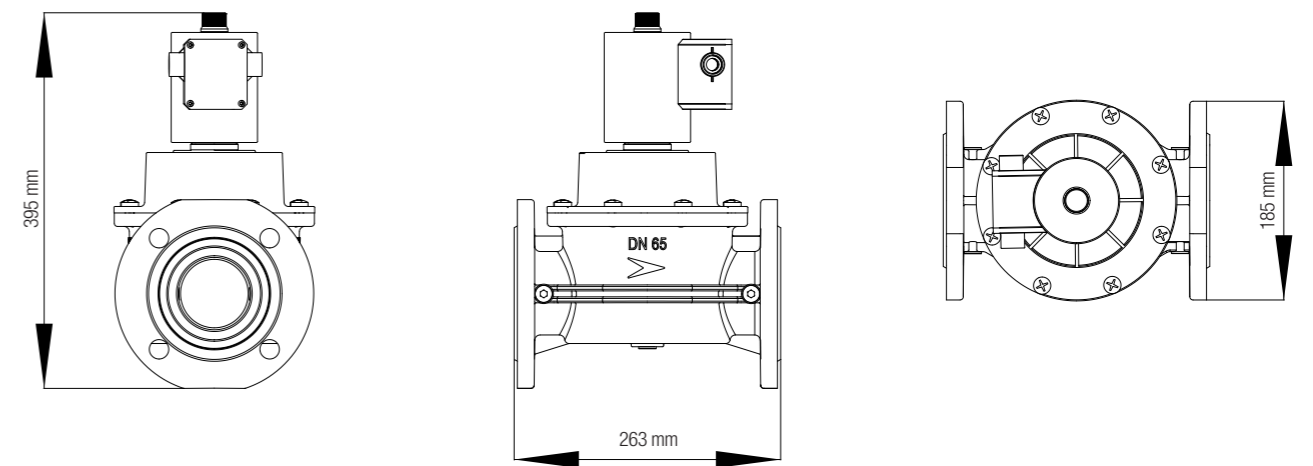
AUTOMATIC GAS VALVES Fast Opening / Fast Closing
DN65, DN80, DN100 – Pmax 360 mbar



Code	Description	Dimension	Pmax
AVD65FO	Gas valve fast opening	DN65	360 mbar
AVD80FO	Gas valve fast opening	DN80	360 mbar
AVD100FO	Gas valve fast opening	DN100	360 mbar
AVD65FO-FR	Gas valve fast opening Flow regulation	DN65	360 mbar
AVD80FO-FR	Gas valve fast opening Flow regulation	DN80	360 mbar
AVD100FO-FR	Gas valve fast opening Flow regulation	DN100	360 mbar
CPI-3	Control position indicator DN65-DN80		
CPI-4	Control position indicator DN100		

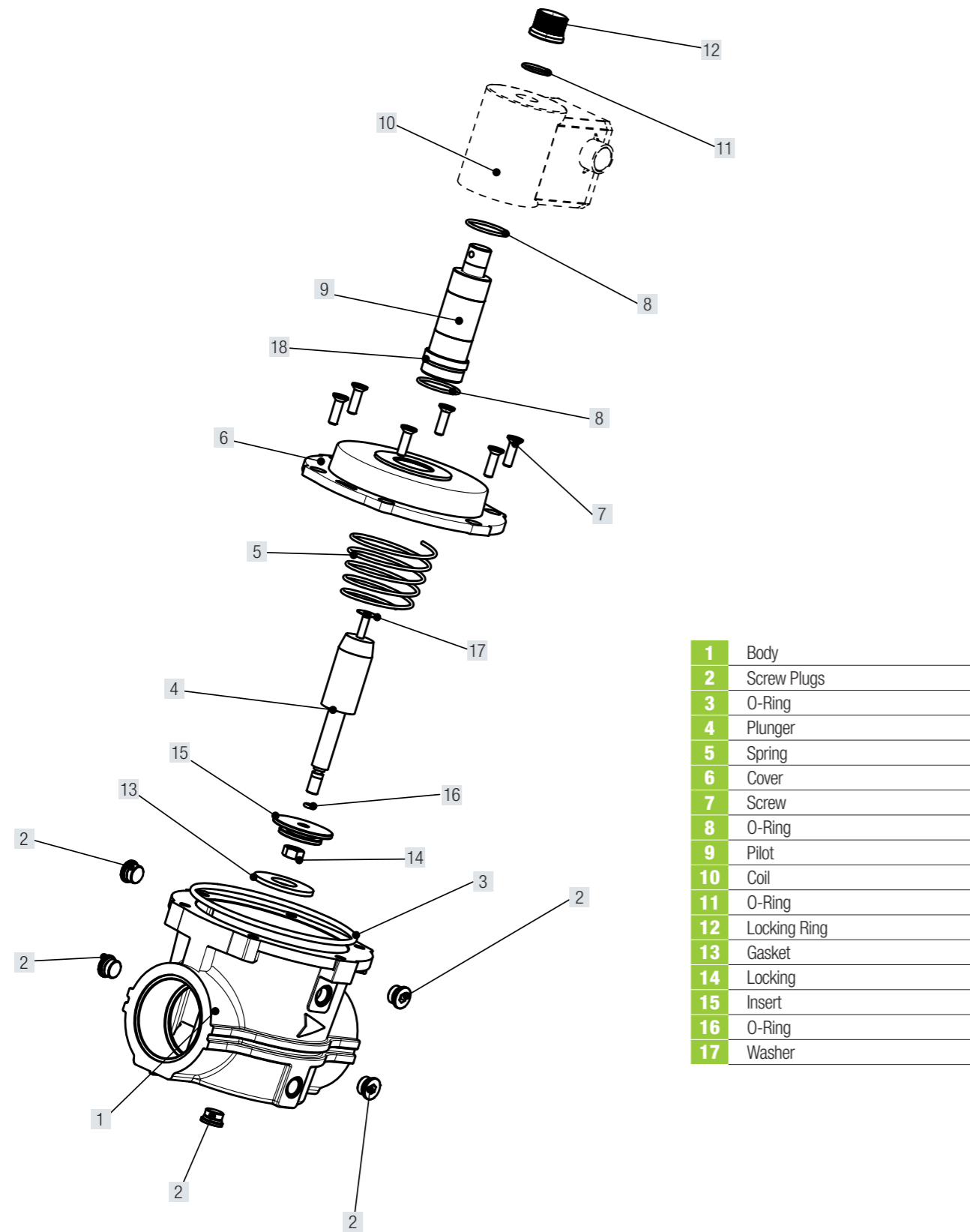
TECHNICAL FEATURES	
Pmax	360 mbar
Inlet connection	Flanged – DN65 – DN80 – DN100 – PN16
Outlet	Flanged – DN65 – DN80 – DN100 – PN16
Opening time	<1 second
Closing time	<1 second
Max number of operations	15 per minute
Incorporated AISI 303 steel mesh filter	
Supply voltage	230V (-15%+10%) 50-60Hz. 110V (-15%+10%) 50-60Hz. 24Vdc (-15%+10%) 50-60Hz
Power	230Vac DN65 - DN80 - DN100 Peak power 400W - Maintain power 4W Coils to class F copper wire class H
Use	Non – aggressive gases – Family 1 – 2 – 3 and air
Test point	5 connections Screw ¼" NPT
Working Temperature	- 20 °C – 60 °C
Approval	EN161
Protection degree	IP65
Materials:	
Complete Body	Aluminium EN AC 43100

1	Body	8	O-Ring
2	Screw Plugs	9	Pilo
3	O-Ring	10	Coil
4	Plunger	11	O-Ring
5	Spring	12	Locking Ring
6	Cover	13	Gasket
7	Screw	14	Connector



Dimension	DN65	DN80	DN100
WEIGHT (kgs)	9,6	9,6	15,8

ASSEMBLY OVERVIEW



- 1** Body
- 2** Screw Plugs
- 3** O-Ring
- 4** Plunger
- 5** Spring
- 6** Cover
- 7** Screw
- 8** O-Ring
- 9** Pilot
- 10** Coil
- 11** O-Ring
- 12** Locking Ring
- 13** Gasket
- 14** Locking
- 15** Insert
- 16** O-Ring
- 17** Washer

SPARE PARTS – ACCESSORIES

COIL

Code	Description	Model
20502719	Coil 230 Vac	½" - ¾" – 1"
80501589	Coil 230 Vac	1 ¼" – 1 ½"
80501590	Coil 230 Vac	2"
80501591	Coil 230 Vac	DN65 – DN80
80501592	Coil 230 Vac	DN100

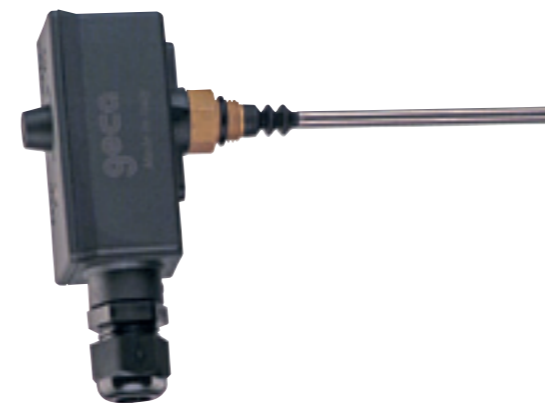
ELECTRONIC BOARD

Code	Description	Model
21802429	Electronic board 230 Vac	½" - ¾" – 1"
81801620	Electronic board - 230 Vac	1 ¼" – 1 ½"
81801621	Electronic board - 230 Vac	2"
81801622	Electronic board - 230 Vac	DN65 – DN80
81801623	Electronic board - 230 Vac	DN100

COIL – ELECTRONIC BOARD – PLASTIC COVER

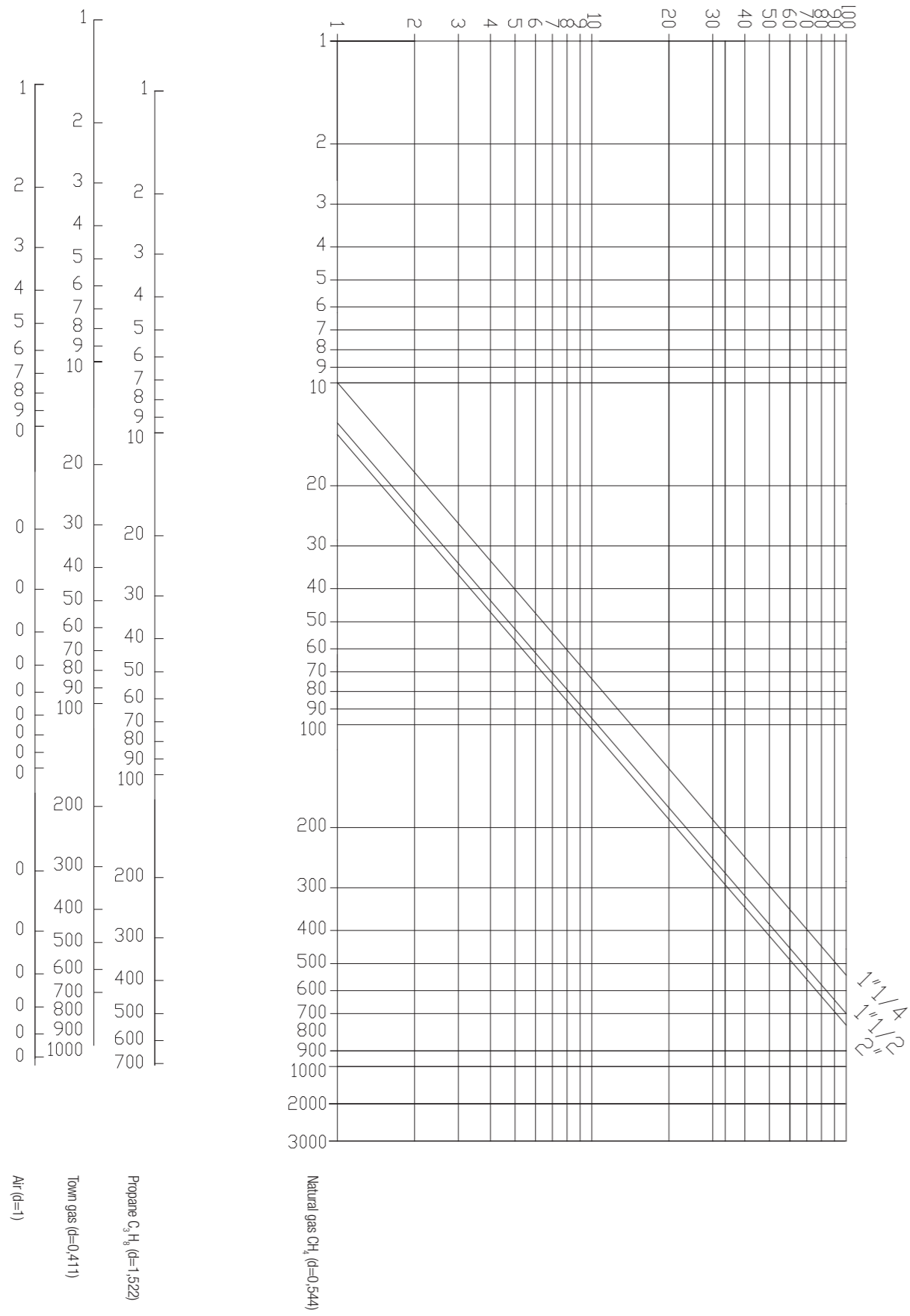
Code	Description	Model
80521593	Coil – Electronic board – Plastic cover	1 ¼" – 1 ½"
80521594	Coil – Electronic board – Plastic cover	2"
80521595	Coil – Electronic board – Plastic cover	DN65 – DN80
80521596	Coil – Electronic board – Plastic cover	DN100

CPI CONTROL POSITION INDICATOR

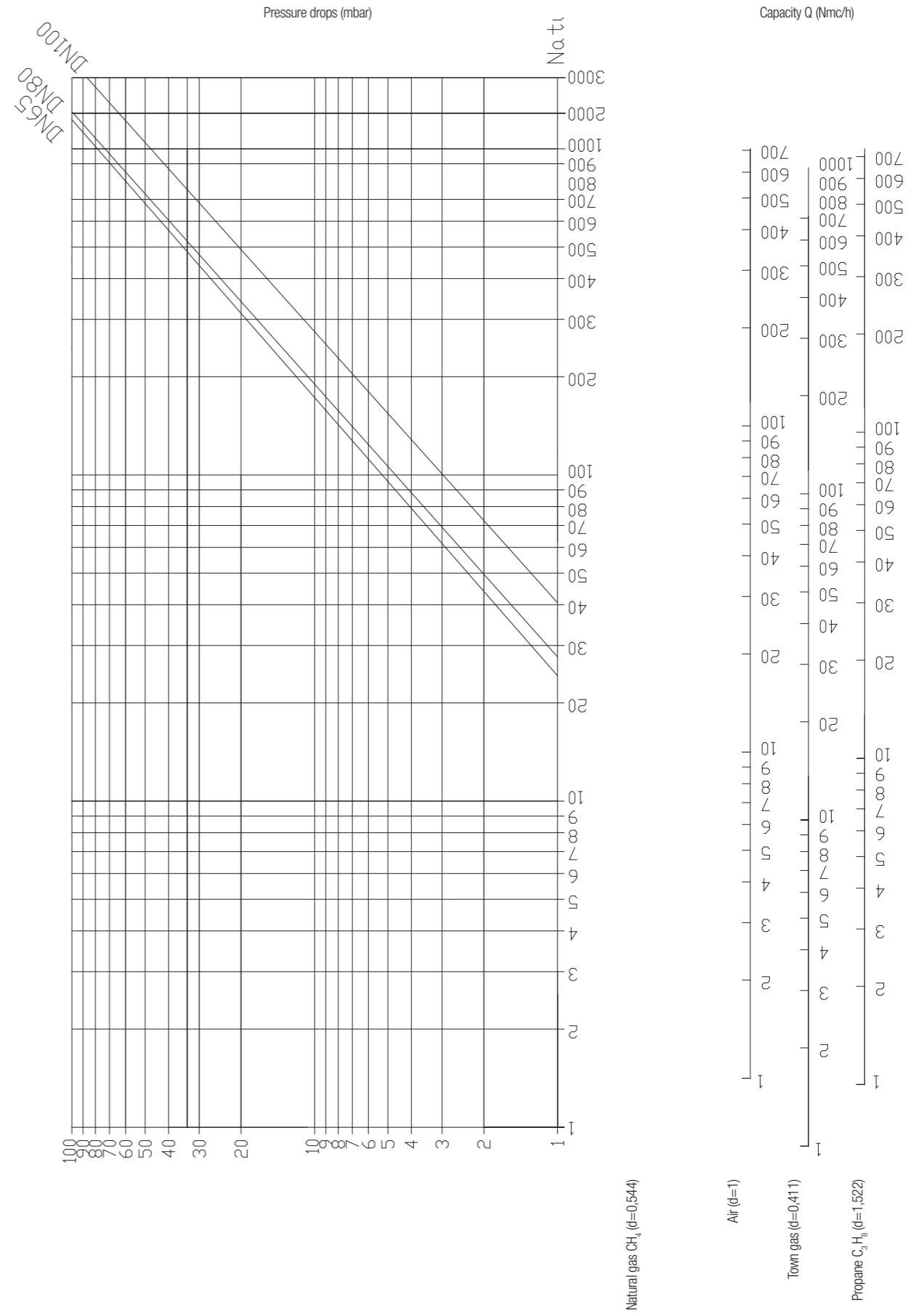


Code	Description	Model
CP1 – 1	Control position indicator	½", ¾", 1"
CP1 – 2	Control position indicator	1 ¼", 1 ½", 2"
CP1 – 3	Control position indicator	DN65 – DN80
CP1 – 4	Control position indicator	DN100

AUTOMATIC VALVE 1 1/4", 1 1/2", 2"



AUTOMATIC VALVE DN65, DN80, DN100



Automatic Gas Valves - Pmax 6 bar

» Automatic gas solenoid valves are used for safety and control of gas for shut-off in gas feed pipes. Suitable for various gasses, including Natural gas, Propane and LPG Gas solenoid valve normally closed solenoid that open automatically when the coil is powered and close automatically when there is no tension.

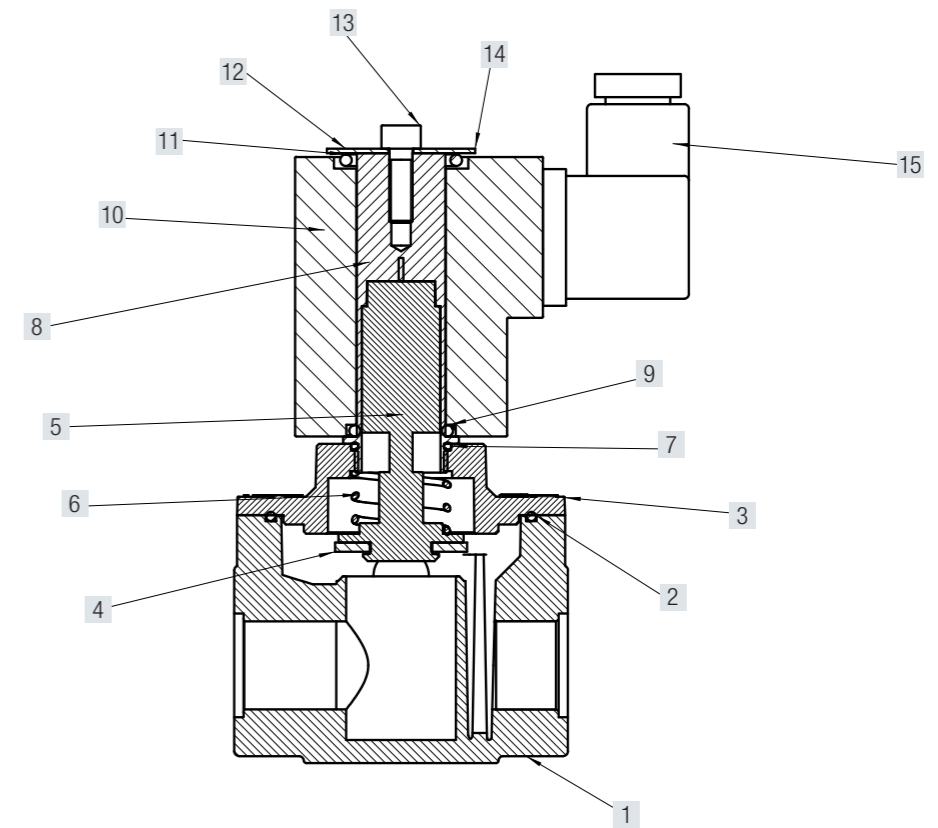
Automatic Gas Valves

AUTOMATIC GAS VALVES Fast Opening / Fast Closing
1/2", 3/4" and 1" – 6 bar p. 96

AUTOMATIC GAS VALVES Fast Opening / Fast Closing
1 1/4", 1 1/2" and 2" – 6 bar p. 98



AUTOMATIC GAS VALVES Fast Opening / Fast Closing
1/2", 3/4" and 1" – Pmax 6 bar



Code	Description	Dimension	Pmax
AV015FO-6B	Gas valve fast opening	1/2"	6 bar
AV020FO-6B	Gas valve fast opening	3/4"	6 bar
AV025FO-6B	Gas valve fast opening	1"	6 bar
AVD025FO-6B	Gas valve fast opening	DN25	6 bar
AV015FO-FR-6B	Gas valve fast opening Flow regulation	1/2"	6 bar
AV020FO-FR-6B	Gas valve fast opening Flow regulation	3/4"	6 bar
AV025FO-FR-6B	Gas valve fast opening Flow regulation	1"	6 bar
AVD025FO-FR-6B	Gas valve fast opening Flow regulation	DN25	6 bar
CPI-1-6B	Control position indicator		

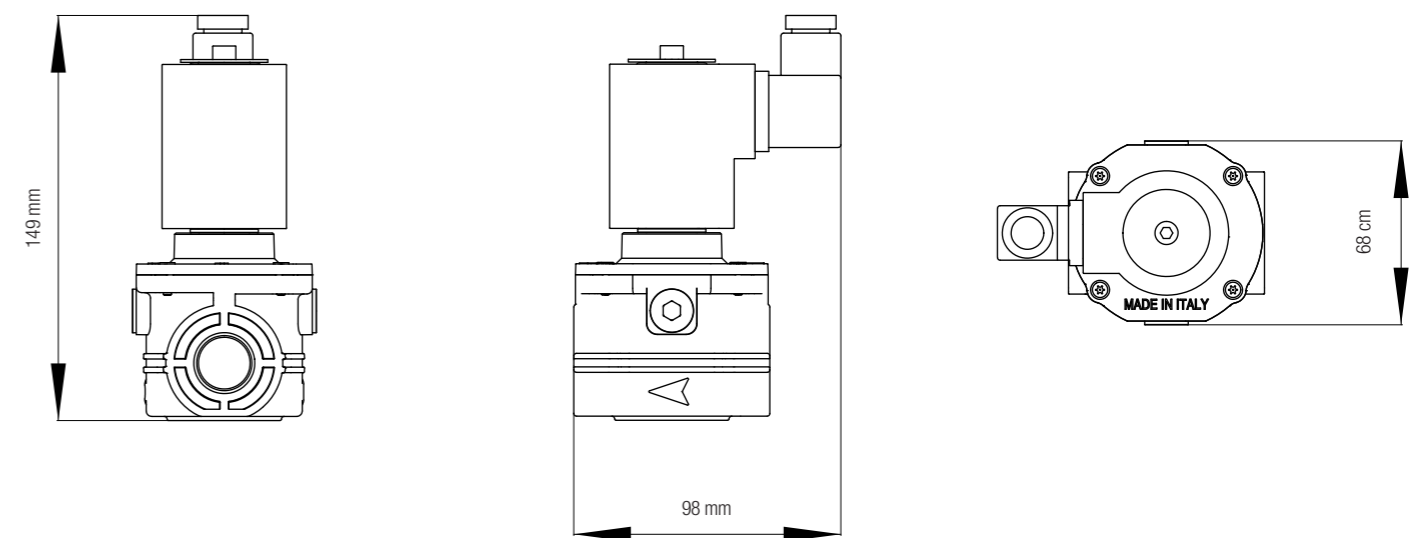
TECHNICAL FEATURES

Pmax	6 bar
Inlet connection - outlet	Thread gas 1/2" 3/4" and 1" - ISO 228 DN25 - Sliding Aluminium flange PN10
Opening time	<1 second
Closing time	<1 second
Max number of operations	20 per minute
	Incorporated AISI 303 steel mesh filter on request
Supply voltage	230V (-15%+10%) 50-60Hz 110V (-15%+10%) 50-60Hz 24Vdc (-15%+10%) 50-60Hz
Power	15 VA Coils to class F copper wire class H
Use	Non - aggressive gases - Family 1 - 2 - 3 and air
Test point	3 connections Screw 1/4" NPT
Working Temperature	- 20 °C - 60 °C
Approval	EN161
Protection degree	IP65

Materials:

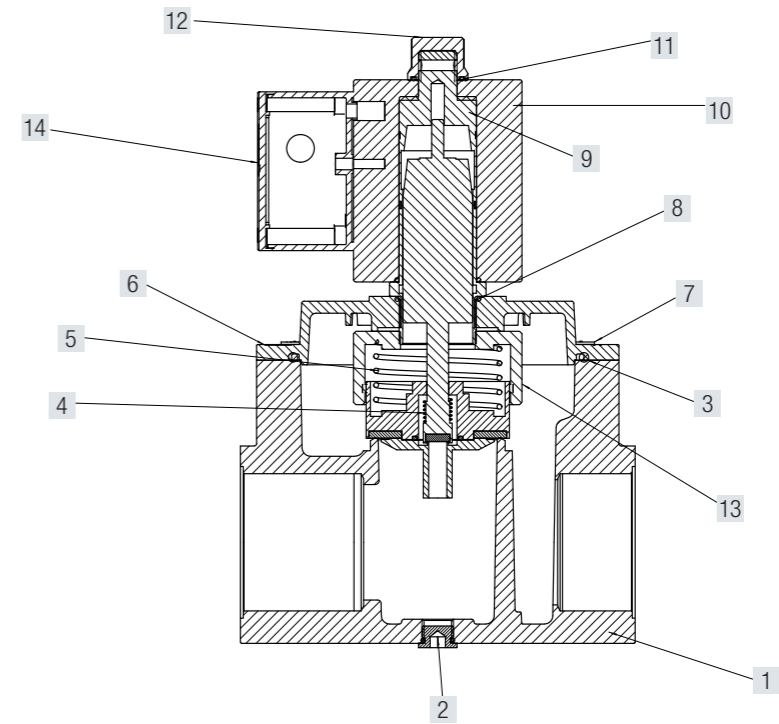
Complete Body	Die - Cast Aluminium Gd - AISi12Cu - EN AB 46100
----------------------	--

1	Body	9	O-Ring
2	O-Ring	10	Coil
3	Cover	11	O-Ring
4	Gasket	12	Washer
5	Plunger	13	Screw M5
6	Spring	14	Washer
7	O-Ring	15	Connector
8	Pilot		



Dimension	1/2"	3/4"	1"
WEIGHT (kgs)	0,8	0,8	0,8

AUTOMATIC GAS VALVES Fast Opening / Fast Closing
1 ¼", 1 ½" and 2" – Pmax 6 bar



Code	Description	Dimension	Pmax
AV032FO-6B	Gas valve fast opening	1 ¼"	6 bar
AV040FO-6B	Gas valve fast opening	1 ½"	6 bar
AV050FO-6B	Gas valve fast opening	2"	6 bar
AVD32FO-6B	Gas valve fast opening	DN32	6 bar
AVD40FO-6B	Gas valve fast opening	DN40	6 bar
AVD50FO-6B	Gas valve fast opening	DN50	6 bar

AV032FO-FR-6B	Gas valve fast opening Flow regulation	1 ¼"	6 bar
AV040FO-FR-6B	Gas valve fast opening Flow regulation	1 ½"	6 bar
AV050FO-FR-6B	Gas valve fast opening Flow regulation	2"	6 bar
AVD32FO-FR-6B	Gas valve fast opening Flow regulation	DN32	6 bar
AVD40FO-FR-6B	Gas valve fast opening Flow regulation	DN40	6 bar
AVD50FO-FR-6B	Gas valve fast opening Flow regulation	DN50	6 bar

CPI-2-6B	Control position indicator
----------	----------------------------

TECHNICAL FEATURES

Pmax 6 bar

Inlet connection - outlet Thread gas 1 ¼", 1 ½" and 2" - ISO 228
 DN32 DN40 DN50 - Sliding Aluminium flange PN10

Opening time <1 second
Closing time <1 second

Max number of operations 20 per minute

Incorporated AISI 303 steel mesh filter on request

Supply voltage 230V (-15%+10%) 50-60Hz
 110V (-15%+10%) 50-60Hz
 24Vdc (-15%+10%) 50-60Hz

Power 230Vac1
 1/4"-11/2"-PeakPower 40W-Maintain power 4W
 2"-Peakpower 130W- Maintain power 1,5W
 Coils to class F copper wire class H

Use Non – aggressive gases – Family 1 – 2 – 3 and air

Test point 5 connections
 Screw ¼" NPT

Working Temperature - 20 °C – 60 °C

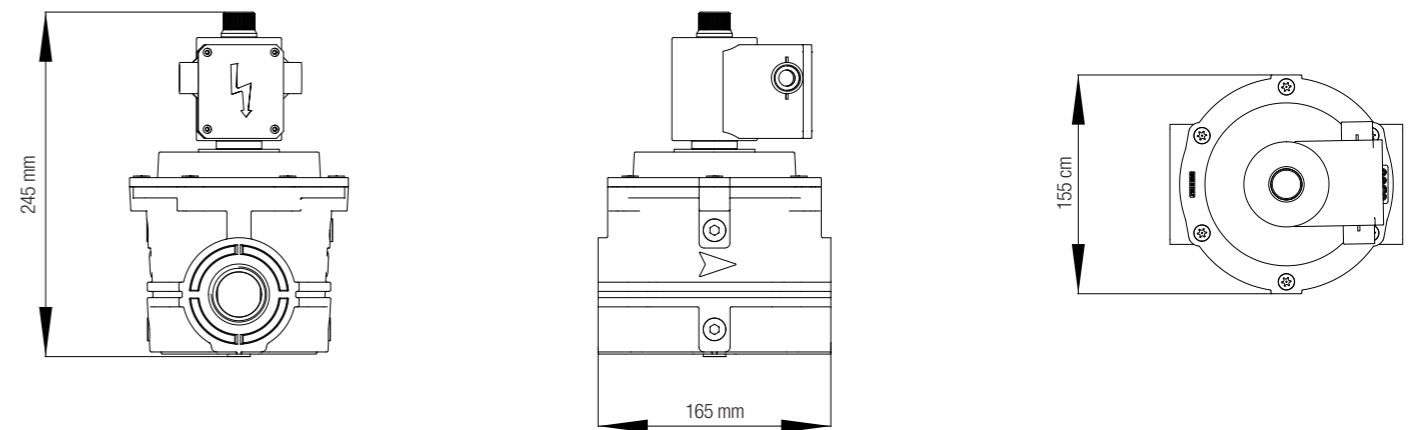
Approval EN161

Protection degree IP65

Materials:

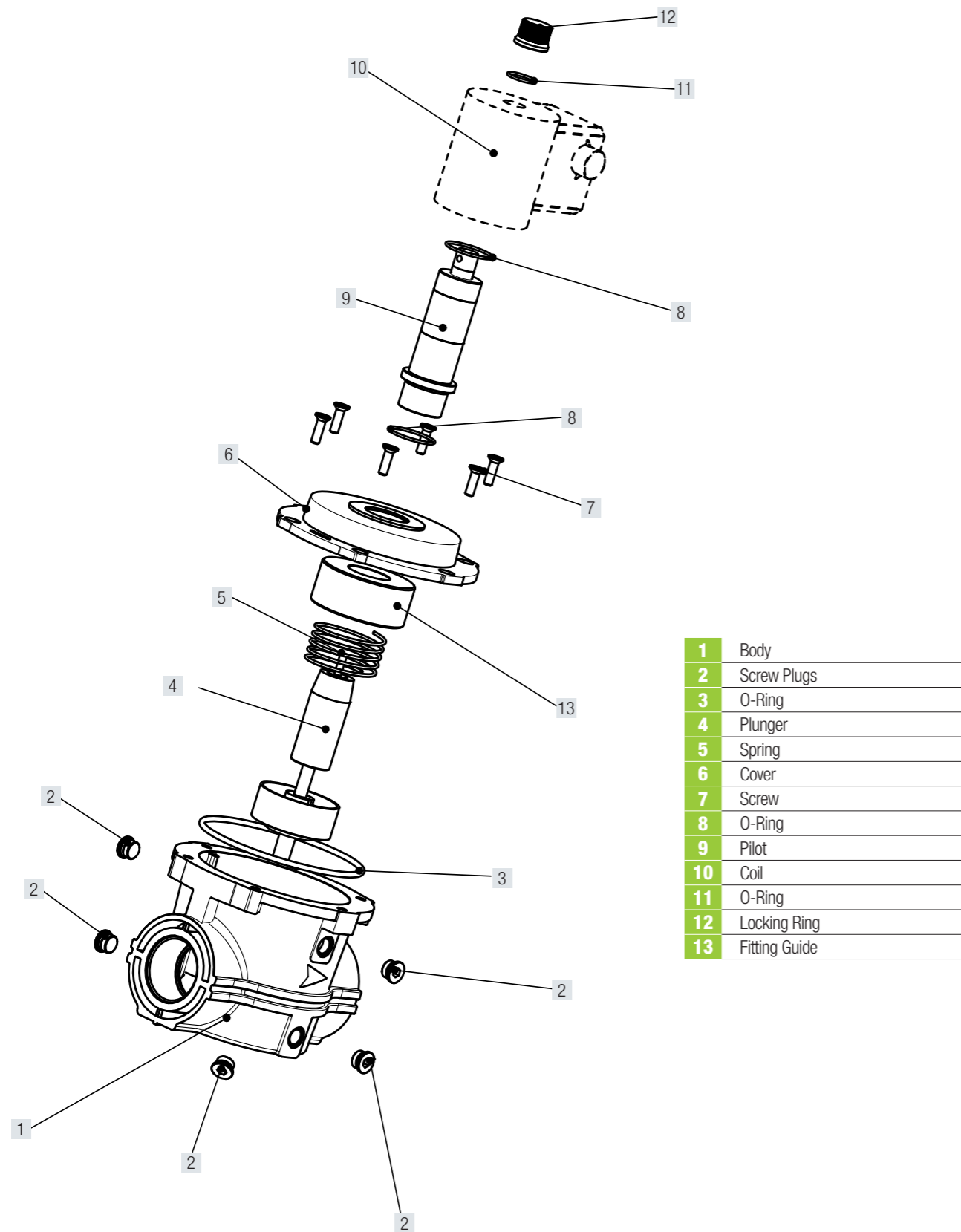
Complete Body Die – Cast Aluminium Gd – AISI12Cu - EN AB 46100

- | | | | |
|---|-------------|----|---------------|
| 1 | Body | 8 | O-Ring |
| 2 | Screw Plugs | 9 | Pilot |
| 3 | O-Ring | 10 | Coil |
| 4 | Plunger | 11 | O-Ring |
| 5 | Spring | 12 | Locking Ring |
| 6 | Cover | 13 | Fitting Guide |
| 7 | Screw | 14 | Connector |



Dimension	1 ¼"	1 ½"	2"
WEIGHT (kgs)	4,2	4,2	4,6

ASSEMBLY OVERVIEW



- 1** Body
- 2** Screw Plugs
- 3** O-Ring
- 4** Plunger
- 5** Spring
- 6** Cover
- 7** Screw
- 8** O-Ring
- 9** Pilot
- 10** Coil
- 11** O-Ring
- 12** Locking Ring
- 13** Fitting Guide

SPARE PARTS – ACCESSORIES

COIL

Code	Description	Model
20502719	Coil 230 Vac	½" - ¾" - 1"
80501589	Coil 230 Vac	1 ¼" - 1 ½"
80501590	Coil 230 Vac	2"

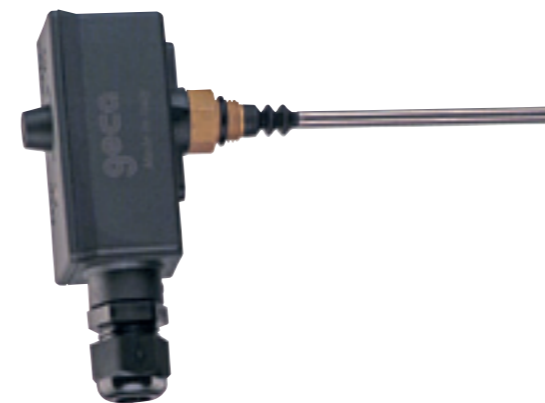
ELECTRONIC BOARD

Code	Description	Model
21802429	Electronic board 230 Vac	½" - ¾" - 1"
81801620	Electronic board - 230 Vac	1 ¼" - 1 ½"
81801621	Electronic board - 230 Vac	2"

COIL – ELECTRONIC BOARD

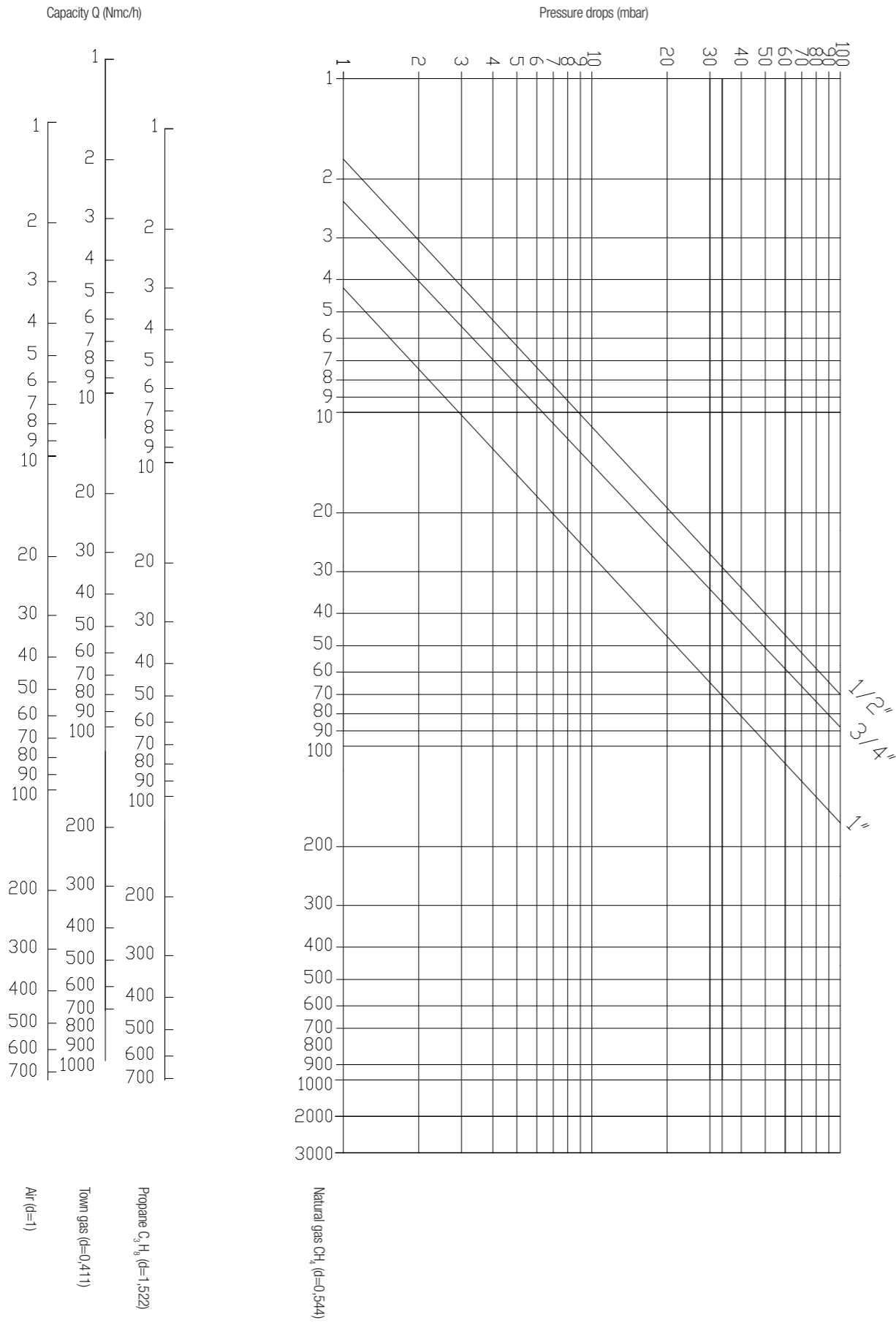
Code	Description	Model
80521593	Coil – Electronic board – Plastic cover	1 ¼" - 1 ½"
80521594	Coil – Electronic board – Plastic cover	2"

CPI - CONTROL POSITION INDICATOR

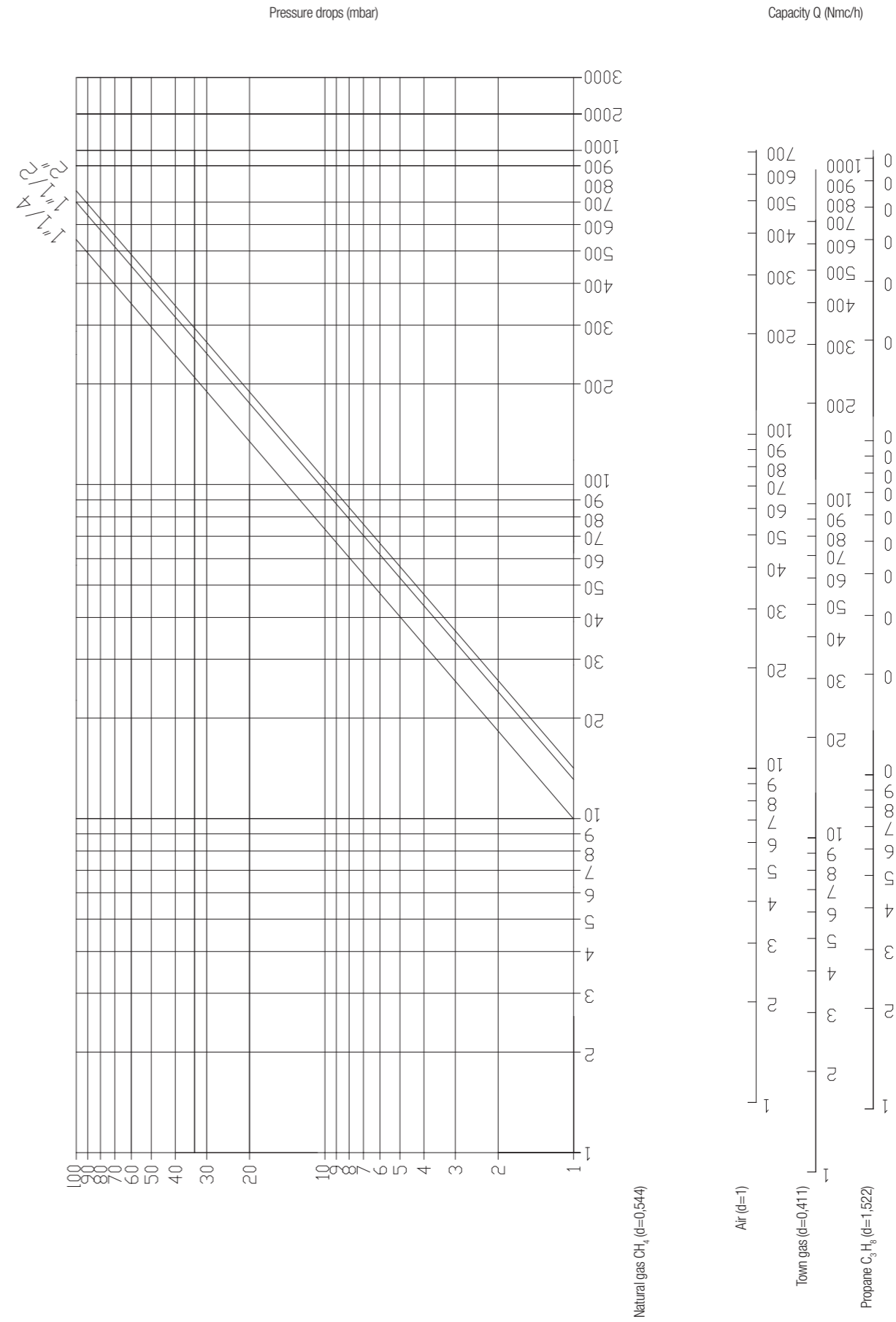


Code	Description	Model
CP1 - 1 - 6B	Control position indicator	½", ¾", 1"
CP1 - 2 - 6B	Control position indicator	1 ¼", 1 ½", 2"

AUTOMATIC VALVE 1/2", 3/4", 1"



AUTOMATIC VALVE 1 1/4", 1 1/2", 2"



Automatic gas valves - Normally open - Vent valves

» Normally open solenoid valve is an automatic pressure relief valve for gas burners and gas appliances. The normally open gas solenoid valve is a safety device which quickly intercepts gas flow when the pressure it is monitoring reaches a pre-set limit due to any anomaly in the system

Normally open - Vent valves

AUTOMATIC GAS VALVES - NORMALLY OPEN - VENT VALVE
1/2", 3/4" and 1" – 360 mbar – 6 bar

p. 106

AUTOMATIC GAS VALVES - Normally Open - Vent valve
1/2", 3/4" and 1" – 360 mbar – Pmax 6 bar



Code	Description	Dimension	Pmax
AV015NO	Gas valve fast opening	1/2"	360 mbar
AV020NO	Gas valve fast opening	3/4"	360 mbar
AV025NO	Gas valve fast opening	1"	360 mbar
AVD25NO	Gas valve fast opening	DN25	360 mbar
AV015NO - 6B	Gas valve fast opening	1/2"	6 bar
AV020NO - 6B	Gas valve fast opening	3/4"	6 bar
AV025NO - 6B	Gas valve fast opening	1"	6 bar
AVD25NO - 6B	Gas valve fast opening	DN25	6 bar

TECHNICAL FEATURES

Pmax	360 mbar - 6 bar
Inlet connection - outlet	Thread gas 1/2" 3/4" and 1" - ISO 228 DN25 - Sliding Aluminium flange PN10
Opening time	<1 second
Closing time	<1 second
Max number of operations	20 per minute
Incorporated AISI 303 steel mesh filter on request	
Supply voltage	230V (-15%+10%) 50-60Hz 110V (-15%+10%) 50-60Hz 24Vdc (-15%+10%) 50-60Hz
Power	15 VA Coils to class F copper wire class H
Use	Non - aggressive gases - Family 1 - 2 - 3 and air
Test point	3 connections Screw 1/4" NPT
Working Temperature	- 20 °C - 60 °C
Approval	EN161
Protection degree	IP65
Materials:	
Complete Body	Die - Cast Aluminium Gd - AISi12Cu - EN AB 46100

AUTOMATIC VALVE 1/2", 3/4", 1"

