



Float tap

series 15.00

Noiseless float tap for high pressure
with adjustable flat brass rod and adjusting spring

art. 15.1

Stainless steel seat - nichel-plated body

Recommended balls



19.4

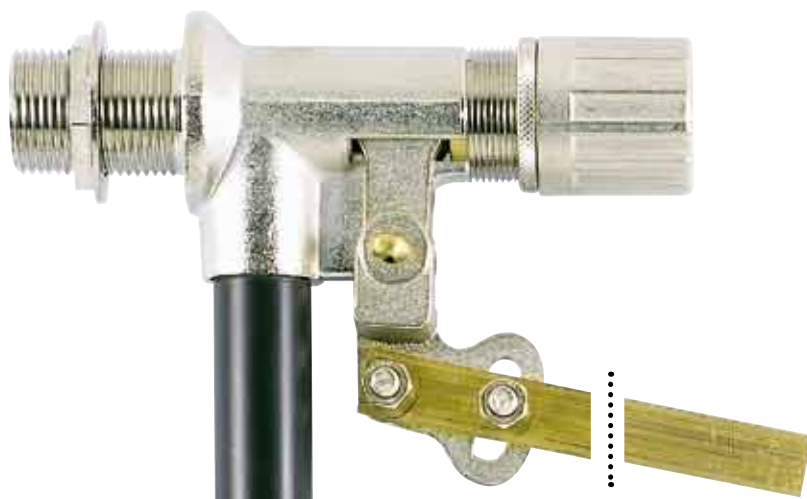


20.2



21.2

art.	3/4"	1"	1"1/4	1"1/2	2"
19.4	150	180	220	220	300
20.2	150	180	200	220	250
21.2	160	160	220	220	250



General Characteristics

The main feature of this model is the closing through piston, controlled directly from the rod on which is mounted to the ball. On the body and external parts made of brass is executed a surface treatment of nickel plating. In the back part, a spring acts on the inside piston to facilitate the closing and to reduce the vibrations. The hardness of the spring can be regulated acting on the back stopper. The rod can be regulated to obtain the closing of the float tap to a requested height. The tap is complete of a plastic waste pipe that reduces the noise generated by the falling water in the collecting tank.

Made in Italy

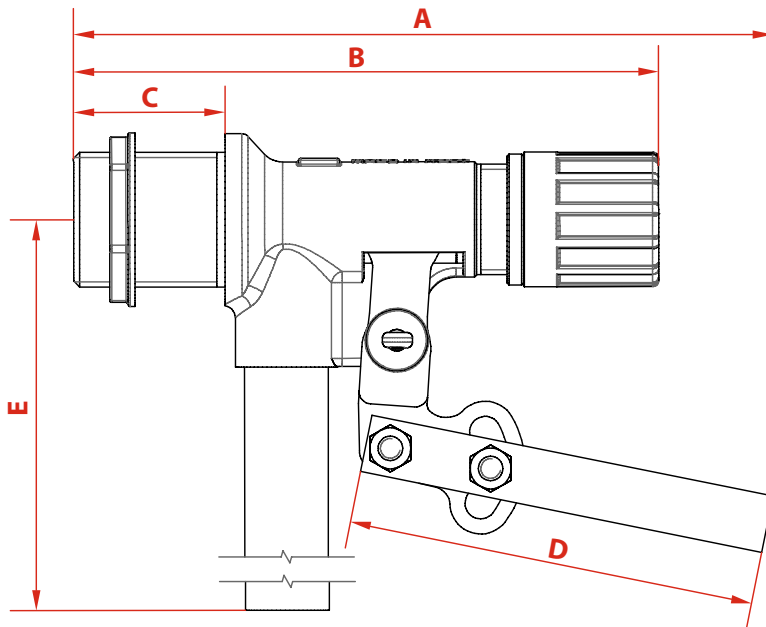
*Bitrerubinetterie believes in the value
of Made in Italy know-how.
Our products are fully manufactured
in Italy.*



Via Circonvallazione, 1
13018 Valduggia (VC)
Tel. +39 0163 48052 - Fax +39 0163 48225
info@bitrerubinetterie.it

www.bitrerubinetterie.it

Float tap series 15.00

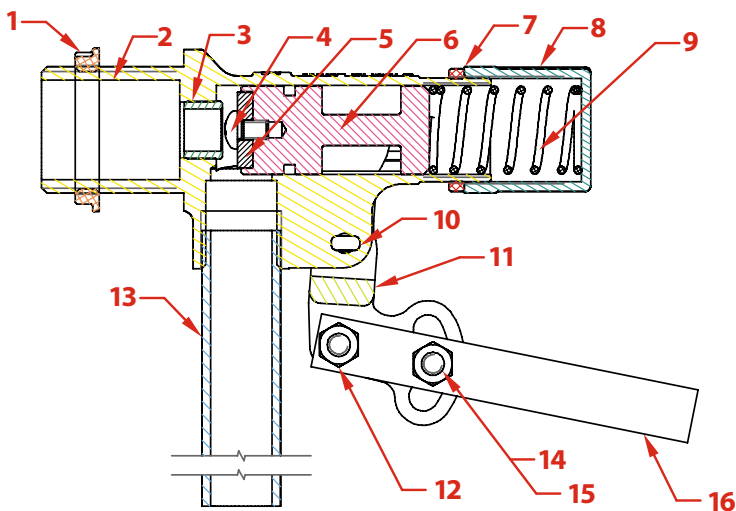


MAXIMUM RECOMMENDED WORKING PRESSURE

bars
12

MAXIMUM RECOMMENDED WORKING TEMPERATURE

°C
60



OVERALL DIMENSIONS (mm)

DN	3/4"	1"	1 1/4"	1 1/2"	2"
A	500	500	705	705	720
B	145	145	180	180	200
C	35	37	50	50	57
D	430	430	600	600	600
E	400	400	430	430	430

RATE OF FLOW m³/h - PRESSURE (bar)

DN	3/4"	1"	1 1/4"	1 1/2"	2"
0,5	2,05	2,75	7,80	7,80	11,90
1	2,80	3,80	10,70	10,70	16,20
2	4,10	5,25	14,60	14,60	22,80
3	5,00	6,35	17,40	17,40	27,60
4	5,70	7,50	19,80	19,80	31,75
5	6,60	8,30	21,60	21,60	35,10
6	7,00	9,00	23,60	23,60	38,50
8	8,40	10,20	26,50	26,50	43,80
10	9,30	10,20	29,30	29,30	48,80
12	10,00	12,30	31,60	31,60	54,00

SEAT BUILT IN AISI 304 IN STAINLESS STEEL VERSIONS

nr	element	material
1	lock-nut	CB 753S UNI EN 1982
2	body	CW617N
3	seat	AISI 304
4	screw	CW614N
5	gasket	SBR
6	valve	CW614N
7	ring	CW614N
8	stopper	CW617N
9	spring	AISI 302
10	split pin	CW614N
11	lever	CB 753S UNI EN 1982
12	nut M6 / M8 X2	AISI 304
13	waste pipe	PVC
14	bolt M6 / M8 X2	AISI 304
15	wascher	AISI 304
16	rod	CW614N