

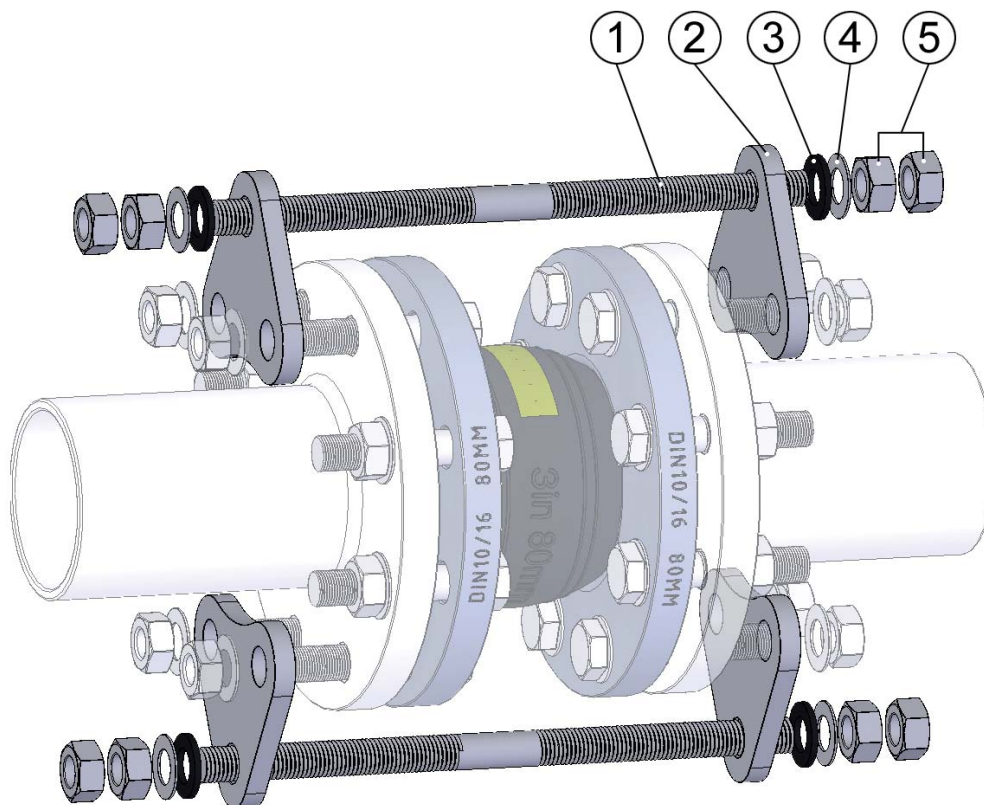
SERIES S10/S15/S20

Limit Rods - Guidelines to Application

The main purpose of Limit Rods is to absorb the force caused by internal pressure, and avoid reaction force over Fix Points. Fix Points will be released but they are still necessary. A Joint with limit rods will work only with axial movements. They are normally used with high pressures and large DN's, that may require very strong anchoring. They also relieve pump frames.

Limit rods can control Joint bellow over-extension and/or over-compression.

Limit rods can be used to avoid or correct mounting mistakes by over expansion.



Main Parts and Materials

Limit Rods Parts:	
	1 Rod
	2 Plate
	3 Rubber gasket
	4 Washer
	5 Nut

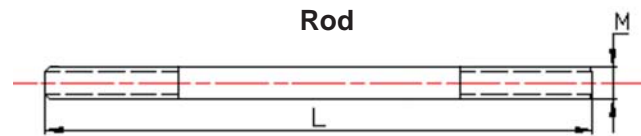
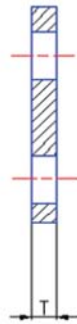
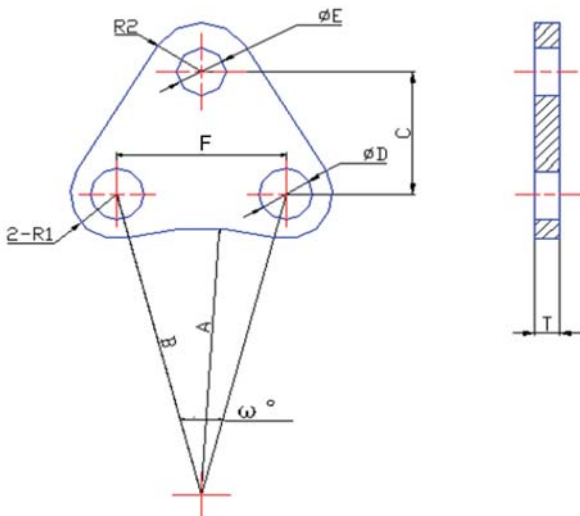
Standard Material: Carbon steel zinc plated S235JR to EN 10025
(old St 37-2 to DIN 17100)

Material Options: Stainless steel AISI 304, AISI 316, etc.

Each Rod Set is comprehensive of:
1 rod + 2 plates + 2 rubber gaskets + 2 washers + 4 nuts

SERIES S15

Limit Rods - Dimensions Plate



Rod Sets - S15 for flanges PN10 (Maximum Working Pressure: 10 bar)

SIZE		M	L	A	B	W°	ØD	ØE	R1	R2	F	C	T	Number of Rod Sets per Joint
NPS	DN													
1-1/2"	40	16	280	37	55	90	18	18	18	20	78	60	10	2
2"	50	16	280	45	62,5	90	18	18	18	20	88	60	10	2
2-1/2"	65	16	280	53	72,5	90	18	18	20	20	103	65	10	2
3"	80	16	290	60	80	45	18	18	20	20	61	50	10	2
4"	100	16	290	70	90	45	18	18	20	20	69	50	10	2
5"	125	16	290	85	105	45	18	18	20	20	80	50	10	2
6"	150	16	300	98	120	45	23	18	22	20	92	55	12	2
8"	200	20	310	125	147,5	45	23	22	22	24	113	60	12	2
10"	250	20	330	153	175	30	23	22	22	24	91	55	18	3
12"	300	20	330	178	200	30	23	22	22	24	104	55	18	3

Rod Sets - S15 for flanges PN16 (Maximum Working Pressure: 16 bar)

SIZE		M	L	A	B	W°	ØD	ØE	R1	R2	F	C	T	Number of Rod Sets per Joint
NPS	DN													
1-1/2"	40	16	280	37	55	90	18	18	18	20	78	60	10	2
2"	50	16	280	45	62,5	90	18	18	18	20	88	65	10	2
2-1/2"	65	16	280	53	72,5	90	18	18	20	20	103	65	10	2
3"	80	16	290	60	80	45	18	18	20	20	61	50	10	2
4"	100	16	290	70	90	45	18	18	20	20	69	50	10	2
5"	125	16	290	85	105	45	18	18	20	20	80	55	10	2
6"	150	16	300	98	120	45	23	18	22	20	92	60	12	2
8"	200	20	310	125	147,5	30	23	23	22	24	76	65	12	3
10"	250	20	330	153	177,5	30	27	23	25	24	92	65	18	3
12"	300	20	330	180	205	30	27	23	25	24	106	65	18	3

Dimensions in mm., subject to manufacturing tolerances
For higher maximum working pressures please consult us