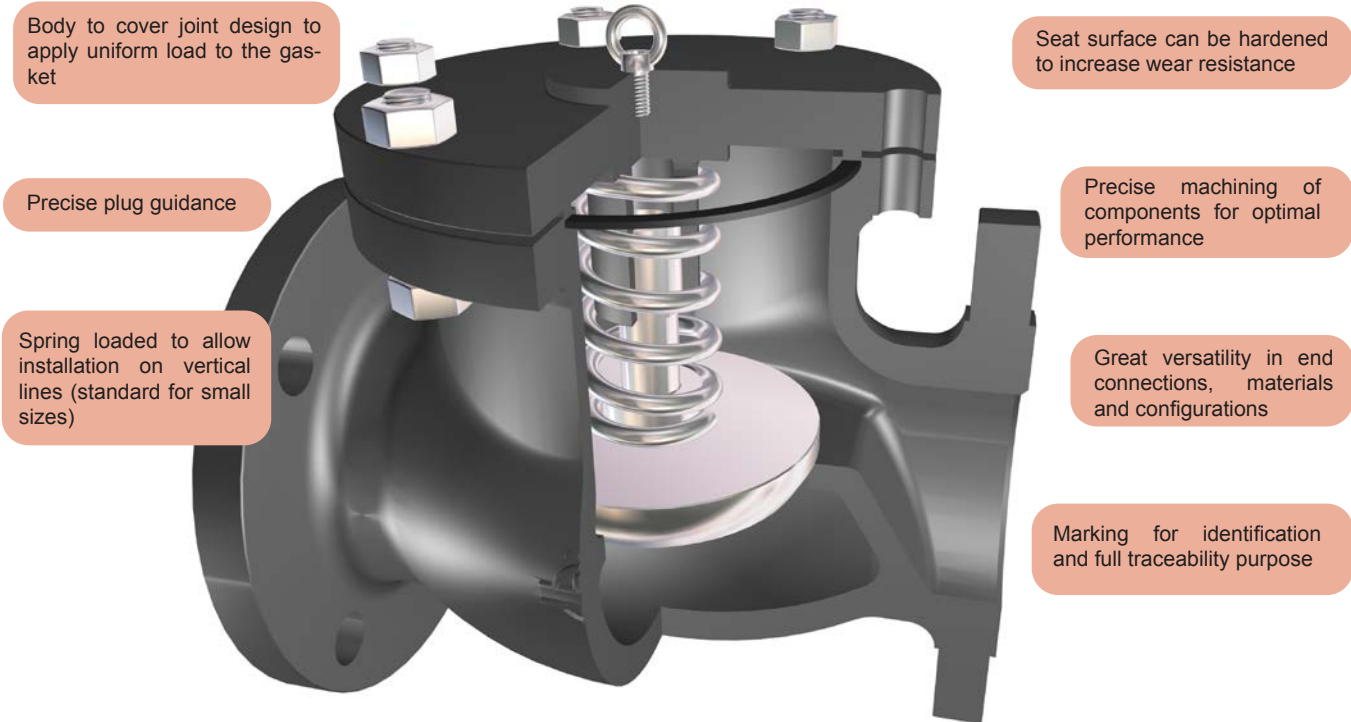


SERIES 3P ANSI RANGE

Check Valves are self-acting valves used for preventing the reverse of flow in a piping system. Series 3P are Piston Check Valves are provided with a guided piston which can be loaded by a spring and closes the disc against a horizontal valve seat. Piston Check Valves provide a larger pressure drop in the pipe line, this design permits a faster closure reaction and more tightness.



Main Features / Reference Standards

Design: ASME B16.34 / BS 1868
 Pressure Rating: 150/300/600/900/1500/2500#
 Face to face length: ASME B16.10
 Valve end connections: Flanged RF or RTJ to ASME B16.5
 Welded BW to ASME B16.25
 Marking: MSS SP-25
 Inspections & Tests: API 598
 Primer painted grey color similar to RAL 7037 for protection during storage and transport (carbon steel body/bonnet)
 Product compliant with Directive 2014/68/EU on Pressure Equipment (PED) for European Union territory

Main Duties / Limits of use

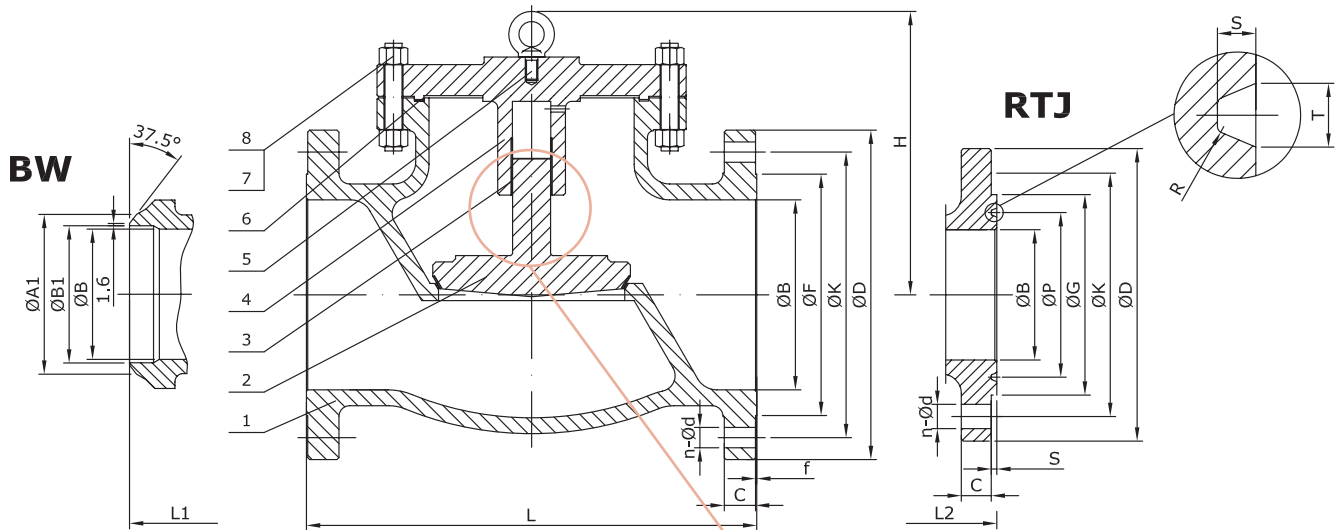
Fluids compatible with materials of construction. Questions referring to chemical resistance, please consult us
 Pressure / Temperature Rating to ASME B16.34. See section "Engineering & Performance Data"
 For products compliant with Directive 2014/68/EU, observe also limits acc. to Annex II tables 6 & 8 (gases & liquids group 1*) and tables 7 & 9 (gases & liquids group 2*) up to category III
 *Classification of fluids (group 1 or 2) acc. to Directive 2014/68/EU, Article 13

Options

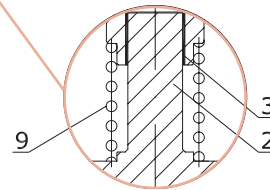
Diverse materials of construction and trim combinations, with or without spring, angle pattern, Y pattern, execution for turbulent flow or unstable condition, execution for aggressive atmosphere, etc. Please consult us

Main Parts and Materials

SERIES 3P ANSI RANGE
Class 150&300



Detailed view with spring option



(recommended for size ≤ 6" and for vertical pipeline)

Nº	Part name	A216 WCB	A352 LCB		A217 WC1 (3PB1_)	A217 WC6 (3PB8_)	A217 WC9 (3PB9_)
		(3PA0_)	Trim 2 (3PA82_)	Trim 12 (3PA8G_)			
1	Body	A216 WCB	A352 LCB+SS304	A352 LCB+SS316	A217 WC1+HF	A217 WC6+HF	A217 WC9+HF
2	Disc	A105	A182 F304	A182 F316+HF	A182 F1+HF	A182 F11+HF	A182 F22+HF
3	Bushing	SS304	SS304	SS316		SS304	
4	Cover	A105	A350 LF2		A182 F1	A182 F11	A182 F22
5	Eye Bolt	Carbon Steel	Carbon Steel			Carbon Steel	
6	Cover Gasket	SS304+Graphite	SS304+Graphite	SS316+Graphite		SS304+Graphite	
7	Cover Bolt	A193 B7	A320 L7		A193 B16	A193 B16	A193 B16
8	Cover Nut	A194 2H	A194 4			A194 4	
9	Spring (Option)	17-4PH	17-4PH			17-4PH	

Fig. 3PA0_	Body Surface	Disc Surface
TRIM #1 (3PA01)	A216 WCB+13Cr	A105+13Cr
TRIM #5 (3PA05)	A216 WCB+HF	A105+HF
TRIM #8 (3PA08)	A216 WCB+HF	A105+13Cr

HF = Hard faced

Nº	Part name	A217 C5 (3PC2_)	A217 C12 (3PC4_)	CF8 (3SI2_)	CF8M (3SI0_)	CF3 (3SI1_)	CF3M (3SI7_)
1	Body	A217 C5+HF	A217 C12+HF	A351 CF8	A351 CF8M+HF	A351 CF3	A351 CF3M+HF
2	Disc	A182 F5+HF	A182 F9+HF	A182 F304	A182 F316	A182 F304L	A182 F316L
3	Bushing	SS304		SS304	SS316	SS316	
4	Cover	A182 F5	A182 F9	A182 F304	A182 F316	A182 F304L	A182 F316L
5	Eye Bolt	Carbon Steel		Carbon Steel		Carbon Steel	
6	Cover Gasket	SS304+Graphite		SS304+Graphite	SS316+Graphite	SS316+Graphite	SS316L+Graphite
7	Cover Bolt	A193 B16	A193 B16	A193 B8	A193 B8M	A193 B8M	
8	Cover Nut	A194 4		A194 8	A194 8M	A194 8M	
9	Spring (Option)	17-4PH		SS304	SS316	SS304	SS316

Information / restriction of technical rules need to be observed!
Installation, Operating and Maintenance Manual can be downloaded at www.comeval.es

The engineer, designing a system or a plant, is responsible for the selection of the correct valve
Product suitability must be verified, contact manufacturer for information

Main Valve Parameters - Class 150

SERIES 3P ANSI RANGE



Nominal Size		inch	2"	2-1/2"	3"	4"	5"	6"	8"
DN			50	65	80	100	125	150	200
End connection	RF	L	203	216	241	292	356	406	495
		ØB	51	65	76	102	128	152	203
		ØD	150	180	190	230	255	280	345
		ØK	120,7	139,7	152,4	190,5	215,9	241,3	298,5
		ØF	92,1	104,8	127	157,2	185,7	215,9	269,9
		C	14,3	15,9	17,5	22,3	22,3	23,9	27
		f	2	2	2	2	2	2	2
		n-Ød	4 - 3/4	4 - 3/4	4 - 3/4	8 - 3/4	8 - 7/8	8 - 7/8	8 - 7/8
	BW	L1	203	216	241	292	356	403	419
		Schedule No.(1)	40	-	40	40	-	40	40
		ØB	51	65	76	102	128	152	203
		ØA1	60,3	-	91	117	-	172	223
		ØB1	52,48	-	78	102	-	154	203
	RTJ	L2	216	229	254	305	369	419	508
		ØB	51	65	76	102	128	152	203
		ØD	150	180	190	230	255	280	345
		ØK	120,7	139,7	152,4	190,5	215,9	241,3	298,5
		ØG	102	121	133	171	194	219	273
		ØP	82,55	101,6	114,3	149,23	171,45	193,68	247,65
		C	17,5	20,7	22,3	22,3	22,3	23,9	27
		n-Ød	4 - 3/4	4 - 3/4	4 - 3/4	8 - 3/4	8 - 7/8	8 - 7/8	8 - 7/8
		T	8,74	8,74	8,74	8,74	8,74	8,74	8,74
		S	6,35	6,35	6,35	6,35	6,35	6,35	6,35
	R	0,8	0,8	0,8	0,8	0,8	0,8	0,8	
	H		130	147	160	175	212	240	350
	Kvs-value		-	-	-	-	-	-	-
	Approx. Weight RF (2)		13	19	24	40	48	54	98
	Approx. Weight BW		10	15	19	32	37	41	76

(1) Other schedule nos. on request
 (2) RTJ weight increases approx. by 10%

Dimensions in mm (except for bolt holes - Ød -, which are in inch units) subject to manufacturing tolerance
 Kvs-values in m³/h / Weights in kg
 For more information about flanged and welded ends refer to page 16

Main Valve Parameters - Class 150

SERIES 3P ANSI RANGE



Nominal Size		inch	10"	12"	14"	16"	18"	20"	24"
		DN	250	300	350	400	450	500	600
End connection	RF	L	622	698	787	914	978	978	1295
		ØB	254	305	337	387	438	489	591
		ØD	405	485	535	595	635	700	815
		ØK	362	431,8	476,3	539,8	577,9	635	749,3
		ØF	323,8	381	412,8	469,9	533,4	584,2	692,2
		C	28,6	30,2	33,4	35	38,1	41,3	46,1
		f	2	2	2	2	2	2	2
		n-Ød	12 - 1	12 - 1	12 - 1 1/8	16 - 1 1/8	16 - 1 1/4	20 - 1 1/4	20 - 1 3/8
	BW	L1	457	502	572	610	660	711	813
		Schedule No.(1)	40	STD	STD	STD	STD	STD	STD
		ØB	254	305	337	387	438	489	591
		ØA1	278	329	362	413	464	516	619
		ØB1	254,5	305	336,5	387,5	438	489	590,5
	RTJ	L2	635	711	800	927	991	991	1308
		ØB	254	305	337	387	438	489	591
		ØD	405	485	535	595	635	700	815
		ØK	362	431,8	476,3	539,8	577,9	635	749,3
		ØG	330	406	425	483	546	597	711
		ØP	304,8	381	396,88	454,03	517,53	558,8	673,1
		C	28,6	30,2	33,4	35	38,1	41,3	46,1
n-Ød		12 - 1	12 - 1	12 - 1 1/8	16 - 1 1/8	16 - 1 1/4	20 - 1 1/4	20 - 1 3/8	
T		8,74	8,74	8,74	8,74	8,74	8,74	8,74	
S		6,35	6,35	6,35	6,35	6,35	6,35	6,35	
R		0,8	0,8	0,8	0,8	0,8	0,8	0,8	
H		420	439	480	565	590	670	760	
Kvs-value		-	-	-	-	-	-	-	
Approx. Weight RF (2)		211	310	578	748	978	1148	1445	
Approx. Weight BW		182	266	522	678	901	1056	1303	

(1) Other schedule nos. on request
 (2) RTJ weight increases approx. by 10%

Dimensions in mm (except for bolt holes - Ød -, which are in inch units) subject to manufacturing tolerance
 Kvs-values in m³/h / Weights in kg
 For more information about flanged and welded ends refer to page 16

Main Valve Parameters - Class 300

SERIES 3P ANSI RANGE



Nominal Size		inch	2"	2-1/2"	3"	4"	5"	6"	8"	
DN			50	65	80	100	125	150	200	
End connection	RF	L	267	292	318	356	400	444	559	
		ØB	51	65	76	102	128	152	203	
		ØD	165	190	210	255	280	320	380	
		ØK	127	149,2	168,3	200	235	269,9	330,2	
		ØF	92,1	104,8	127	157,2	185,7	215,9	269,9	
		C	20,7	23,9	27	30,2	33,4	35	39,7	
		f	2	2	2	2	2	2	2	
		n-Ød	8 - 3/4	8 - 7/8	8 - 7/8	8 - 7/8	8 - 7/8	8 - 7/8	12 - 7/8	12 - 1
	BW	L1	267	292	318	356	400	444	559	
		Schedule No.(1)	40	-	40	40	-	40	40	
		ØB	51	65	76	102	128	152	203	
		ØA1	60,3	-	91	117	-	172	223	
		ØB1	52,48	-	78	102	-	154	203	
	RTJ	L2	283	308	334	372	416	460	575	
		ØB	51	65	76	102	128	152	203	
		ØD	165	190	210	255	280	320	380	
		ØK	127	149,2	168,3	200	235	269,9	330,2	
		ØG	108	127	146	175	210	241	302	
		ØP	82,55	101,6	123,83	149,23	180,98	211,12	269,88	
		C	20,7	23,9	27	30,2	33,4	35	39,7	
		n-Ød	8 - 3/4	8 - 7/8	8 - 7/8	8 - 7/8	8 - 7/8	8 - 7/8	12 - 7/8	12 - 1
		T	11,91	11,91	11,91	11,91	11,91	11,91	11,91	11,91
		S	7,92	7,92	7,92	7,92	7,92	7,92	7,92	7,92
	R	0,8	0,8	0,8	0,8	0,8	0,8	0,8	0,8	
	H		140	166	185	210	268	310	390	
	Kvs-value		-	-	-	-	-	-	-	
	Approx. Weight RF (2)		21	30	36	60	84	102	196	
	Approx. Weight BW		16	23	28	47	65	79	160	

(1) Other schedule nos. on request
 (2) RTJ weight increases approx. by 10%

Dimensions in mm (except for bolt holes - Ød -, which are in inch units) subject to manufacturing tolerance
 Kvs-values in m³/h / Weights in kg
 For more information about flanged and welded ends refer to page 16

Main Valve Parameters - Class 300

SERIES 3P ANSI RANGE



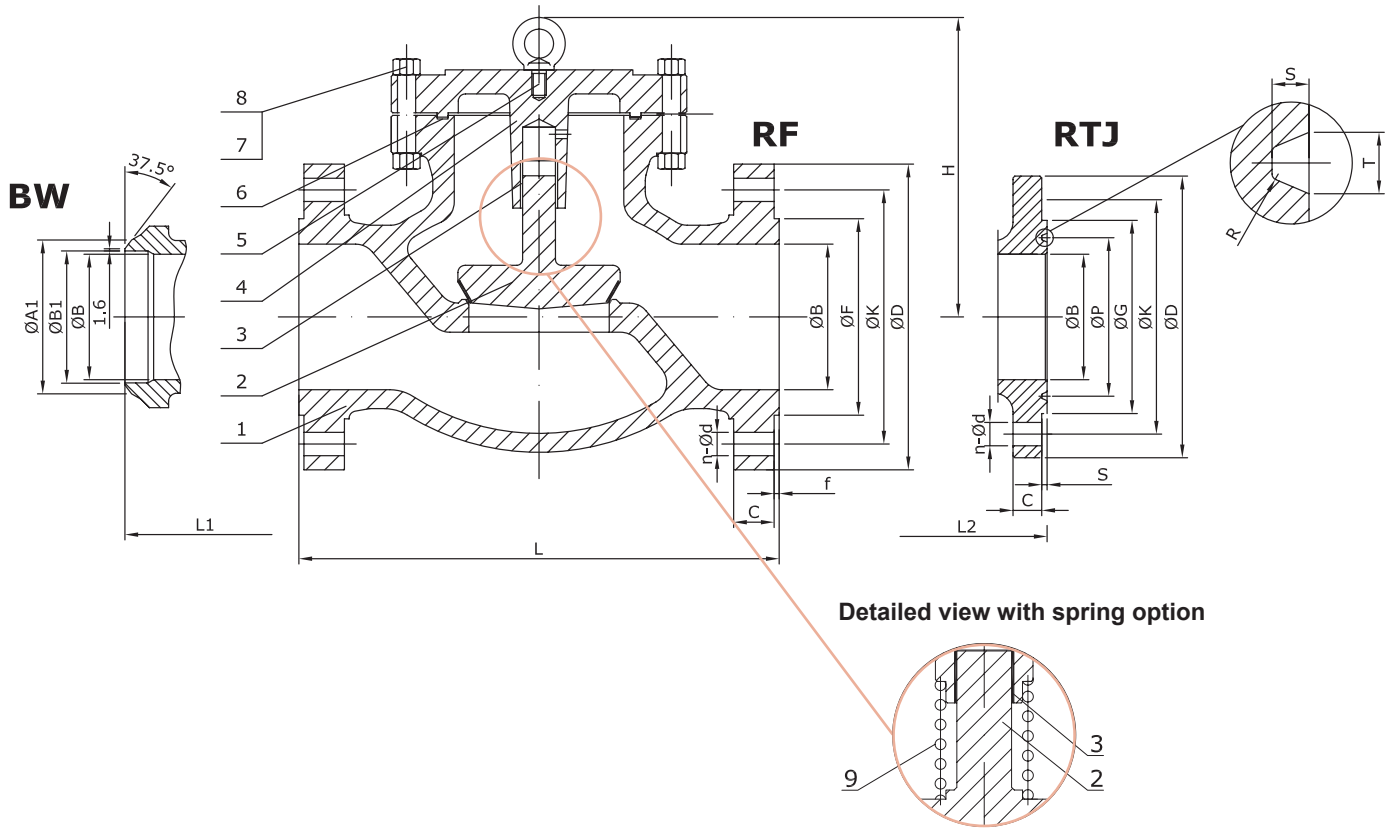
Nominal Size		inch	10"	12"	14"	16"	18"	20"	24"
DN			250	300	350	400	450	500	600
End connection	RF	L	622	711	838	864	978	1016	1346
		ØB	254	305	337	387	432	483	584
		ØD	445	520	585	650	710	775	915
		ØK	387,4	450,8	514,4	571,5	628,6	685,8	812,8
		ØF	323,8	381	412,8	469,9	533,4	584,2	692,2
		C	46,1	49,3	52,4	55,6	58,8	62	68,3
		f	2	2	2	2	2	2	2
		n-Ød	16 - 1 1/8	16 - 1 1/4	20 - 1 1/4	20 - 1 3/8	24 - 1 3/8	24 - 1 3/8	24 - 1 5/8
	BW	L1	622	711	-	-	-	-	-
		Schedule No.(1)	40	STD	STD	STD	STD	STD	STD
		ØB	254	305	337	387	432	483	584
		ØA1	278	329	362	413	464	516	619
		ØB1	254,5	305	336,5	387,5	438	489	590,5
	RTJ	L2	638	727	854	880	994	1035	1368
		ØB	254	305	337	387	432	483	584
		ØD	445	520	585	650	710	775	915
		ØK	387,4	450,8	514,4	571,5	628,6	685,8	812,8
		ØG	356	413	457	508	575	635	749
		ØP	323,85	981	419,1	469,9	533,4	584,2	692,15
		C	46,1	49,3	52,4	55,6	58,8	62	68,3
		n-Ød	16 - 1 1/8	16 - 1 1/4	20 - 1 1/4	20 - 1 3/8	24 - 1 3/8	24 - 1 3/8	24 - 1 5/8
		T	11,91	11,91	11,91	11,91	11,91	13,49	16,66
		S	7,92	7,92	7,92	7,92	7,92	9,53	11,13
		R	0,8	0,8	0,8	0,8	0,8	1,5	1,5
H		425	480	517	580	640	710	810	
Kvs-value		-	-	-	-	-	-	-	
Approx. Weight RF (2)		331	493	918	1020	1318	1658	-	
Approx. Weight BW		282	419	817	887	1152	1453	-	

- (1) Other schedule nos. on request
- (2) RTJ weight increases approx. by 10%
- (3) Acc. to manufacturer standard

Dimensions in mm (except for bolt holes - Ød -, which are in inch units) subject to manufacturing tolerance
 Kvs-values in m³/h / Weights in kg
 For more information about flanged and welded ends refer to page 16

Main Parts and Materials

SERIES 3P ANSI RANGE
Class 600



(recommended for size ≤ 6" and for vertical pipeline)

Nº	Part name	A216 WCB (3PA0_)	A352 LCB		A217 WC1 (3PB1_)	A217 WC6 (3PB8_)	A217 WC9 (3PB9_)
			Trim 2 (3PA82_)	Trim 12 (3PA8G_)			
1	Body	A216 WCB	A352 LCB+SS304	A352 LCB+SS316	A217 WC1+HF	A217 WC6+HF	A217 WC9+HF
2	Disc	A105	A182 F304	A182 F316+HF	A182 F1+HF	A182 F11+HF	A182 F22+HF
3	Bushing	SS304	SS304	SS316		SS304	
4	Cover	A105	A350 LF2		A182 F1	A182 F11	A182 F22
5	Eye Bolt	Carbon Steel	Carbon Steel			Carbon Steel	
6	Cover Gasket	SS304+Graphite	SS304+Graphite	SS316+Graphite		SS304+Graphite	
7	Cover Bolt	A193 B7	A320 L7		A193 B16	A193 B16	A193 B16
8	Cover Nut	A194 2H	A194 4			A194 4	
9	Spring (Option)	17-4PH	17-4PH			17-4PH	

Fig. 3PA0_	Body Surface	Disc Surface
TRIM #1 (3PA01)	A216 WCB+13Cr	A105+13Cr
TRIM #5 (3PA05)	A216 WCB+HF	A105+HF
TRIM #8 (3PA08)	A216 WCB+HF	A105+13Cr

HF = Hard faced

Nº	Part name	A217 C5 (3PC2_)	A217 C12 (3PC4_)	CF8 (3SI2_)	CF8M (3SI0_)	CF3 (3SI1_)	CF3M (3SI7_)
1	Body	A217 C5+HF	A217 C12+HF	A351 CF8	A351 CF8M+HF	A351 CF3	A351 CF3M+HF
2	Disc	A182 F5+HF	A182 F9+HF	A182 F304	A182 F316	A182 F304L	A182 F316L
3	Bushing	SS304		SS304	SS316	SS316	
4	Cover	A182 F5	A182 F9	A182 F304	A182 F316	A182 F304L	A182 F316L
5	Eye Bolt	Carbon Steel		Carbon Steel		Carbon Steel	
6	Cover Gasket	SS304+Graphite		SS304+Graphite	SS316+Graphite	SS316+Graphite	SS316L+Graphite
7	Cover Bolt	A193 B16	A193 B16	A193 B8	A193 B8M	A193 B8M	
8	Cover Nut	A194 4		A194 8	A194 8M	A194 8M	
9	Spring (Option)	17-4PH		SS304	SS316	SS304	SS316

Main Valve Parameters - Class 600

SERIES 3P ANSI RANGE



Nominal Size		inch	2"	2-1/2"	3"	4"	5"	6"	8"
DN			50	65	80	100	125	150	200
End connection	RF	L	292	330	356	432	508	559	660
		ØB	51	65	76	102	128	152	200
		ØD	165	190	210	275	330	355	420
		ØK	127	149,2	168,3	215,9	266,7	292,1	349,2
		ØF	92,1	104,8	127	157,2	185,7	215,9	269,9
		C	25,4	28,6	31,8	38,1	44,5	47,7	55,6
		f	7	7	7	7	7	7	7
		n-Ød	8 - 3/4	8 - 7/8	8 - 7/8	8 - 1	8 - 1 1/8	12 - 1 1/8	12 - 1/4
	BW	L1	292	330	356	432	508	559	660
		Schedule No.(1)	80	-	80	80	-	80	80
		ØB	51	65	76	102	128	152	200
		ØA1	60,3	-	91	117	-	172	223
		ØB1	49,22	-	73,5	97	-	146,5	193,5
	RTJ	L2	295	346	372	448	524	562	663
		ØB	51	65	76	102	128	152	200
		ØD	165	190	210	275	330	355	420
		ØK	127	149,2	168,3	215,9	266,7	292,1	349,2
		ØG	108	127	146	175	210	241	302
		ØP	82,55	101,6	123,83	149,23	180,98	211,12	269,88
		C	25,4	28,6	31,8	38,1	44,5	47,7	55,6
		n-Ød	8 - 3/4	8 - 7/8	8 - 7/8	8 - 1	8 - 1 1/8	12 - 1 1/8	12 - 1/4
		T	11,91	11,91	11,91	11,91	11,91	11,91	11,91
		S	7,92	7,92	7,92	7,92	7,92	7,92	7,92
	R	0,8	0,8	0,8	0,8	0,8	0,8	0,8	
	H		145	194	230	265	314	350	415
	Kvs-value		-	-	-	-	-	-	-
	Approx. Weight RF (2)		26	38	47	85	151	200	349
	Approx. Weight BW		19	28	34	62	116	156	285

(1) Other schedule nos. on request
 (2) RTJ weight increases approx. by 10%

Dimensions in mm (except for bolt holes - Ød -, which are in inch units) subject to manufacturing tolerance
 Kvs-values in m³/h / Weights in kg
 For more information about flanged and welded ends refer to page 16

Main Valve Parameters - Class 600

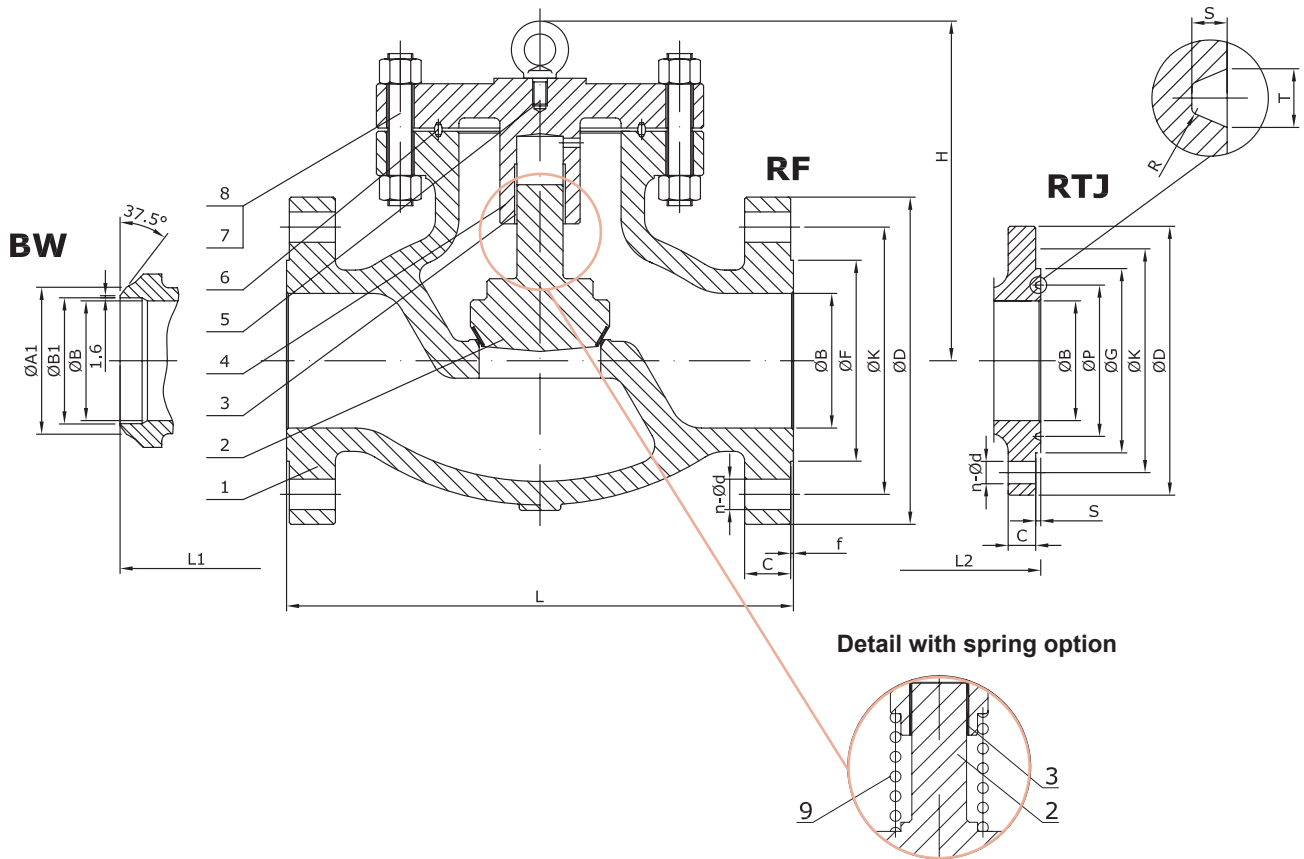
Nominal Size		inch	10"	12"	14"	16"	18"	20"	24"
		DN	250	300	350	400	450	500	600
End connection	RF	L	787	838	889	991	1092	1194	1397
		ØB	248	299	327	375	419	464	559
		ØD	510	560	605	685	745	815	940
		ØK	431,8	489	527	603,2	654	723,9	838,2
		ØF	323,8	381	412,8	469,9	533,4	584,2	692,2
		C	63,5	66,7	69,9	76,2	82,6	88,9	101,6
		f	7	7	7	7	7	7	7
		n-Ød	16 - 1 3/8	20 - 1 3/8	20 - 1 1/2	20 - 1 5/8	20 - 1 3/4	24 - 1 3/4	24 - 2
	BW	L1	787	838	889	991	1092	1194	1397
		Schedule No.(1)	80	80	80	80	80	80	80
		ØB	248	299	327	375	419	464	559
		ØA1	278	329	362	413	464	516	619
		ØB1	243	289	317,5	363,5	409,5	455,5	547,5
	RTJ	L2	790	841	892	994	1095	1200	1407
		ØB	248	299	327	375	419	464	559
		ØD	510	560	605	685	745	815	940
		ØK	431,8	489	527	603,2	654	723,9	838,2
		ØG	356	413	457	508	575	635	749
		ØP	323,85	981	419,1	469,9	533,4	584,2	692,15
		C	63,5	66,7	69,9	76,2	82,6	88,9	101,6
		n-Ød	16 - 1 3/8	20 - 1 3/8	20 - 1 1/2	20 - 1 5/8	20 - 1 3/4	24 - 1 3/4	24 - 2
		T	11,91	11,91	11,91	11,91	11,91	13,49	16,66
		S	7,92	7,92	7,92	7,92	7,92	9,53	11,13
		R	0,8	0,8	0,8	0,8	0,8	1,5	1,5
H		485	560	620	670	780	910	965	
Kvs-value		-	-	-	-	-	-	-	
Approx. Weight RF (2)		497	893	1088	1360	2380	2975	3910	
Approx. Weight BW		394	771	908	1132	2092	2621	3472	

- (1) Other schedule nos. on request
 (2) RTJ weight increases approx. by 10%

Dimensions in mm (except for bolt holes - Ød -, which are in inch units) subject to manufacturing tolerance
 Kvs-values in m³/h / Weights in kg
 For more information about flanged and welded ends refer to page 16

Main Parts and Materials

SERIES 3P ANSI RANGE
Class 900,1500&2500



(recommended for size ≤ 6" and for vertical installation)

Nº	Part name	A216 WCB	A352 LCB		A217 WC1	A217 WC6	A217 WC9
		(3PA0_)	Trim 15 (3PA8L_)	Trim 16 (3PA8K_)	(3PB1_)	(3PB8_)	(3PB9_)
1	Body	ASTM A216 WCB	A352 LCB+HF	A352 LCB+HF	A217 WC1+HF	A217 WC6+HF	A217 WC9+HF
2	Disc	ASTM A105	A182 F304+HF	A182 F316+HF	A182 F1+HF	A182 F11+HF	A182 F22+HF
3	Bushing	SS304	SS304	SS316		SS304	
4	Cover	ASTM A105	A350 LF2		A182 F1	A182 F11	A182 F22
5	Eye Bolt	Carbon Steel	Carbon Steel			Carbon Steel	
6	Cover Gasket	SS304	SS304	SS316		SS304	
7	Cover Bolt	ASTM A193 B7	A320 L7			A193 B16	
8	Cover Nut	ASTM A194 2H	A194 4			A194 4	
9	Spring (Option)	17-4PH	17-4PH			17-4PH	

Fig. 3PA0_	Body Surface	Disc Surface
TRIM #1 (3PA01)	A216 WCB+13Cr	A105+13Cr
TRIM #5 (3PA05)	A216 WCB+HF	A105+HF
TRIM #8 (3PA08)	A216 WCB+HF	A105+13Cr

HF = Hard faced

Nº	Part name	A217 C5	A217 C12	CF8	CF8M	CF3	CF3M
		(3PC2_)	(3PC4_)	(3SI2_)	(3SI0_)	(3SI1_)	(3SI7_)
1	Body	A217 C5+HF	A217 C12+HF	A351 CF8+HF	A351 CF8M+HF	A351 CF3+HF	A351 CF3M+HF
2	Disc	A182 F5+HF	A182 F9+HF	A182 F304+HF	A182 F316+HF	A182 F304L+HF	A182 F316L+HF
3	Bushing	SS304		SS304	SS316	SS316	
4	Cover	A182 F5	A182 F9	A182 F304	A182 F316	A182 F304L	A182 F316L
5	Eye Bolt	Carbon Steel		Carbon Steel		Carbon Steel	
6	Cover Gasket	SS304		SS304	SS316	SS316	SS316L
7	Cover Bolt	A193 B16		A193 B8	A193 B8M	A193 B8M	
8	Cover Nut	A194 4		A194 8	A194 8M	A194 8M	
9	Spring (Option)	17-4PH		SS304	SS316	SS304	SS316

Information / restriction of technical rules need to be observed!
Installation, Operating and Maintenance Manual can be downloaded at www.comeval.es

The engineer, designing a system or a plant, is responsible for the selection of the correct valve
Product suitability must be verified, contact manufacturer for information

Main Valve Parameters - Class 900

SERIES 3P ANSI RANGE



Nominal Size		inch	2"	2-1/2"	3"	4"	5"	6"	8"
DN			50	65	80	100	125	150	200
End connection	RF	L	368	419	381	457	559	610	737
		ØB	48	62	73	98	123	146	191
		ØD	215	245	240	290	350	380	470
		ØK	165,1	190,5	190,5	235	279,4	317,5	393,7
		ØF	92,1	104,8	127	157,2	185,7	215,9	269,9
		C	38,1	41,3	38,1	44,5	50,8	55,6	63,5
		f	7	7	7	7	7	7	7
		n-Ød	8 - 7/8	8 - 1	8 - 7/8	8 - 1 1/8	8 - 1 1/4	12 - 1 1/8	12 - 1 3/8
	BW	L1	368	419	381	457	559	610	737
		Schedule No.(1)	160	-	160	120	-	120	100
		ØB	48	62	73	98	123	146	191
		ØA1	60,3	-	91	117	-	172	223
		ØB1	38,16	-	66,5	92	-	140	189
	RTJ	L2	371	422	384	460	562	613	740
		ØB	48	62	73	98	123	146	191
		ØD	215	245	240	290	350	380	470
		ØK	165,1	190,5	190,5	235	279,4	317,5	393,7
		ØG	124	137	156	181	216	241	308
		ØP	95,25	107,95	123,83	149,23	180,98	211,12	269,88
		C	38,1	41,3	38,1	44,5	50,8	55,6	63,5
n-Ød		8 - 7/8	8 - 1	8 - 7/8	8 - 1 1/8	8 - 1 1/4	12 - 1 1/8	12 - 1 3/8	
T		11,91	11,91	11,91	11,91	11,91	11,91	11,91	
S		7,92	7,92	7,92	7,92	7,92	7,92	7,92	
R	0,8	0,8	0,8	0,8	0,8	0,8	0,8		
H		180	226	260	320	360	390	540	
Kvs-value		-	-	-	-	-	-	-	
Approx. Weight RF (2)		72	82	89	136	253	340	608	
Approx. Weight BW		58	66	72	108	207	280	506	

(1) Other schedule nos. on request
 (2) RTJ weight increases approx. by 10%

Dimensions in mm (except for bolt holes - Ød -, which are in inch units) subject to manufacturing tolerance
 Kvs-values in m³/h / Weights in kg
 For more information about flanged and welded ends refer to page 16

Main Valve Parameters - Class 900

Nominal Size		inch	10"	12"	14"	16"	18"	20"	24"
DN			250	300	350	400	450	500	600
End connection	RF	L	838	965	1029	1130	1219	1321	1549
		ØB	238	282	311	356	400	445	533
		ØD	545	610	640	705	785	855	1040
		ØK	469,9	533,4	558,8	616	685,8	749,3	901,7
		ØF	323,8	381	412,8	469,9	533,4	584,2	692,2
		C	69,9	79,4	85,8	88,9	101,6	108	139,7
		f	7	7	7	7	7	7	7
		n-Ød	16 - 1 3/8	20 - 1 3/8	20 - 1 1/2	20 - 1 5/8	20 - 1 7/8	20 - 2	20 - 2 1/2
	BW	L1	838	965	1029	1130	1219	1321	1549
		Schedule No.(1)	100	100	100	100	100	100	100
		ØB	238	282	311	356	400	445	533
		ØA1	278	329	362	413	464	516	619
		ØB1	236,5	281	308	354	398,5	443	532
	RTJ	L2	841	968	1039	1140	1232	1334	1568
		ØB	238	282	311	356	400	445	533
		ØD	545	610	640	705	785	855	1040
		ØK	469,9	533,4	558,8	616	685,8	749,3	901,7
		ØG	362	419	467	524	594	648	772
		ØP	323,85	381	419,1	469,9	533,4	584,2	692,15
		C	69,9	79,4	85,8	88,9	101,6	108	139,7
		n-Ød	16 - 1 3/8	20 - 1 3/8	20 - 1 1/2	20 - 1 5/8	20 - 1 7/8	20 - 2	20 - 2 1/2
		T	11,91	11,91	16,66	16,66	19,84	19,84	26,97
		S	7,92	7,92	11,13	11,13	12,7	12,7	15,88
		R	0,8	0,8	1,5	1,5	1,5	1,5	2,4
H		570	605	745	770	875	935	1100	
Kvs-value		-	-	-	-	-	-	-	
Approx. Weight RF (2)		765	1233	2763	3570	-	-	-	
Approx. Weight BW		623	1037	2540	3301	-	-	-	

(1) Other schedule nos. on request

(2) RTJ weight increases approx. by 10%

Dimensions in mm (except for bolt holes - Ød -, which are in inch units) subject to manufacturing tolerance

 Kvs-values in m³/h / Weights in kg

For more information about flanged and welded ends refer to page 16

Main Valve Parameters - Class 1500

SERIES 3P ANSI RANGE

Nominal Size		inch	2"	2-1/2"	3"	4"	5"	6"	8"	10"	12"	14"	16"
DN			50	65	80	100	125	150	200	250	300	350	400
End connection	RF	L	368	419	470	546	673	705	832	991	1130	1257	1384
		ØB	48	61	70	92	115	136	178	222	263	289	330
		ØD	215	245	265	310	375	395	485	585	675	750	825
		ØK	165,1	190,5	203,2	241,3	292,1	317,5	393,7	482,6	571,5	635	704,8
		ØF	92,1	104,8	127	157,2	185,7	215,9	269,9	323,8	381	412,8	469,9
		C	38,1	41,3	47,7	54	73,1	82,6	92,1	108	123,9	133,4	146,1
		f	7	7	7	7	7	7	7	7	7	7	7
		n-Ød	8 - 7/8	8 - 1	8 - 1 1/4	8 - 1 3/8	8 - 1 5/8	12 - 1 1/2	12 - 1 3/4	12 - 2	16 - 2 1/8	16 - 2 3/8	16 - 2 5/8
	BW	L1	368	419	470	546	673	705	832	991	1130	1257	1384
		Schedule No.(1)	160	-	160	120	-	120	120	120	120	120	120
		ØB	48	61	70	92	115	136	178	222	263	289	330
		ØA1	60,3	-	91	117	-	172	223	278	329	362	413
		ØB1	38,16	-	66,5	92	-	140	182,5	230	273	300	344,5
	RTJ	L2	371	422	473	549	676	711	842	1001	1146	1276	1406
		ØB	48	61	70	92	115	136	178	222	263	289	330
		ØD	215	245	265	310	375	395	485	585	675	750	825
		ØK	165,1	190,5	203,2	241,3	292,1	317,5	393,7	482,6	571,5	635	704,8
		ØG	124	137	168	194	229	248	318	371	438	489	546
		ØP	95,25	107,95	136,53	161,93	193,68	211,14	269,88	323,85	381	419,1	469,9
		C	38,1	41,3	47,7	54	73,1	82,6	92,1	108	123,9	133,4	146,1
		n-Ød	8 - 7/8	8 - 1	8 - 1 1/4	8 - 1 3/8	8 - 1 5/8	12 - 1 1/2	12 - 1 3/4	12 - 2	16 - 2 1/8	16 - 2 3/8	16 - 2 5/8
		T	11,91	11,91	11,91	11,91	11,91	13,49	16,66	16,66	23,01	26,97	30,18
		S	7,92	7,92	7,92	7,92	7,92	9,53	11,13	11,13	14,27	15,88	17,48
		R	0,8	0,8	0,8	0,8	0,8	1,5	1,5	1,5	1,5	2,4	2,4
H		220	260	290	330	405	460	575	655	780	875	975	
Kvs-value		-	-	-	-	-	-	-	-	-	-	-	
Approx. Weight RF (2)		72	111	140	238	385	493	765	1148	2890	3655	-	
Approx. Weight BW		58	90	114	202	321	409	622	903	2526	3144	-	

(1) Other schedule nos. on request
 (2) RTJ weight increases approx. by 10%

Dimensions in mm (except for bolt holes - Ød -, which are in inch units) subject to manufacturing tolerance
 Kvs-values in m³/h / Weights in kg
 For more information about flanged and welded ends refer to page 16

Main Valve Parameters - Class 2500

SERIES 3P ANSI RANGE



Nominal Size		inch	2"	2-1/2"	3"	4"	5"	6"	8"	10"	12"
DN			50	65	80	100	125	150	200	250	300
End connection	RF	L	451	508	578	673	794	914	1022	1270	1422
		ØB	38	49	57	73	93	111	146	184	219
		ØD	235	265	305	355	420	485	550	675	760
		ØK	171,4	196,8	228,6	273	323,8	368,3	438,2	539,8	619,1
		ØF	92,1	104,8	127	157,2	185,7	215,9	269,9	323,8	381
		C	50,9	57,2	66,7	76,2	92,1	108	127	165,1	184,2
		f	7	7	7	7	7	7	7	7	7
		n-Ød	8 - 1 1/8	8 - 1 1/4	8 - 1 3/8	8 - 1 5/8	8 - 1 7/8	8 - 2 1/8	12 - 2 1/8	12 - 2 5/8	12 - 2 7/8
	BW	L1	451	508	578	673	794	914	1022	1270	1422
		Schedule No.(1)	160	-	160	160	-	160	160	160	160
		ØB	38	49	57	73	93	111	146	184	219
		ØA1	60,3	-	91	117	-	172	223	278	329
		ØB1	42,82	-	66,5	87,5	-	132	173	216	257
	RTJ	L2	454	511	581	676	797	918	1027	1276	1430
		ØB	38	49	57	73	93	111	146	184	219
		ØD	235	265	305	355	420	485	550	675	760
		ØK	171,4	196,8	228,6	273	323,8	368,3	438,2	539,8	619,1
		ØG	133	149	168	203	241	279	340	425	495
		ØP	101,6	111,13	127	157,18	190,5	228,6	279,4	342,9	406,4
		C	50,9	57,2	66,7	76,2	92,1	108	127	165,1	184,2
		n-Ød	8 - 1 1/8	8 - 1 1/4	8 - 1 3/8	8 - 1 5/8	8 - 1 7/8	8 - 2 1/8	12 - 2 1/8	12 - 2 5/8	12 - 2 7/8
		T	11,91	13,49	13,49	16,66	19,84	19,84	23,01	30,18	33,32
		S	7,92	9,53	9,53	11,13	12,7	12,7	14,27	17,48	17,48
		R	0,8	1,5	1,5	1,5	1,5	1,5	1,5	2,4	2,4
H		290	310	325	395	453	495	565	730	825	
Kvs-value		-	-	-	-	-	-	-	-	-	
Approx. Weight RF (2)		85	139	179	425	792	1063	2040	2805	3570	
Approx. Weight BW		62	100	127	346	640	857	2009	2223	2740	

(1) Other schedule nos. on request
 (2) RTJ weight increases approx. by 10%

Dimensions in mm (except for bolt holes - Ød -, which are in inch units) subject to manufacturing tolerance
 Kvs-values in m³/h / Weights in kg
 For more information about flanged and welded ends refer to page 16