

# MEATAL SEAT WEDGE GATE VALVE WITH ISO PAD

Metal seat wedge gate valve with mounting flange used for pipeline isolation. Suitable for water, wastewater and sewage duties.

## FEATURES

- Unique lightweight ductile iron design
- WRAS listed non-metallic components
- Durable fusion bonded epoxy coated
- Precision machined/keyed spindle
- ISO5210 mouting
- Clockwise closing spindle as standard, clockwise opening on request
- Corrosion resistant construction
- 100% full bore
- Drilling bosses and drain plug as standard
- Integral feet to facilitate safe storage
- Robust low maintenance deisgn

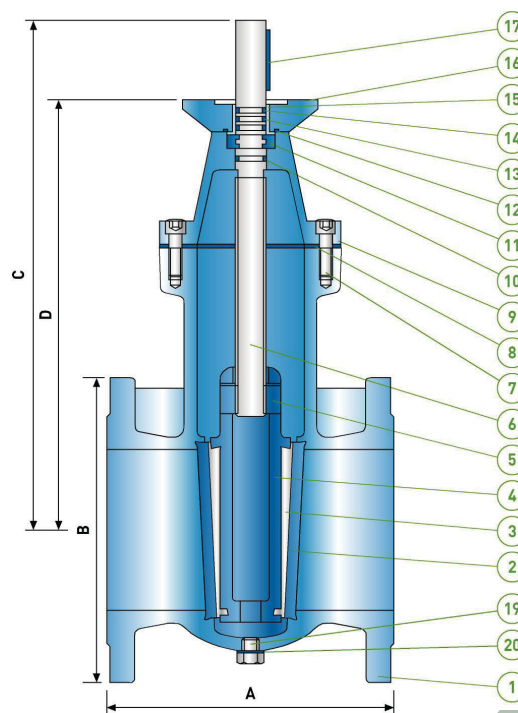


## TECHNICAL SPECIFICATION

STANDARD	BS 5163 Pt. 1 & 2:2004
RANGE	DN80 - DN300
FLANGES & DRILLINGS ALTERNATIVES	BS EN 1092-2:1987 Table 9 (PN16) BS EN 1092-2:1987 Table 8 (PN10) BS10 Table D or E
MAXIMUM WORKING PRESSURE	16 Bar
HYDROSTATIC PRESSURE TESTS	Seat: 1.1 x PN (17.6 Bar) Body: 1.5 x PN (24.0 Bar)
TEMPERATURE RANGE	-10°C to 70°C (insulate at 0°C and below)
COATING	Blue fusion bonded epoxy (WRAS listed)
FACE-TO-FACE DIMENSIONS	EN558 Basic Series 3

## MATERIAL SPECIFICATION

ITEM	ITEM NAME	MATERIAL	SPECIFICATION
1	Body	Ductile Iron	BS EN 1563 Gr 500/7
2	Body Seat Ring	Copper Alloy	BS EN 1982
3	Wedge Seat Ring	Copper Alloy	BS EN 1982
4	Wedge	Ductile Iron	BS EN 1563 Gr 500/7
5	Stem Nut	Copper Alloy	BS EN 1982
6	Stem	Stainless Steel	BS EN 10088 1.4021
7	Bolt	BZP Steel	BS 3692 Gr 8.8
8	Body Gasket	EPDM	WRAS Listed
9	Bonnet	Ductile Iron	BS EN 1563 Gr 500/7
10	'O' Ring	EPDM	WRAS Listed
11	Thrust Collar	Copper Alloy	BS EN 1982
12	'O' Ring	EPDM	WRAS Listed
13	'O' Ring	EPDM	WRAS Listed
14	Dust Seal	EPDM	WRAS Listed
15	Bush	Copper Alloy	BS EN 1982
16	ISO Seal Housing	Ductile Iron	BS EN 1563 Gr 500/7
17	Key	Key Steel	BS 970 080M40 (EN8)
18*	Seal Housing Bolts	BZP Steel	BS 3692 Gr 8.8
19	Drain Plug	Stainless Steel	BS EN 10088 1.4301
20	Gasket	PTFE	WRAS Listed



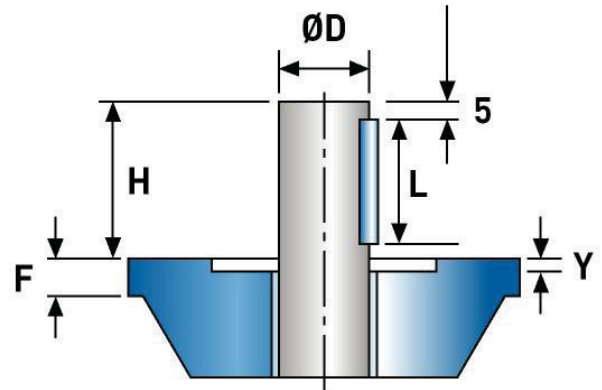
\*Seal Housing Bolts not shown

# MEATAL SEAT WEDGE GATE VALVE WITH ISO PAD

## DIMENSIONAL DRAWINGS

DN	A	B	C	D	NO. OF TURNS	TORQUE @ 16 BAR (N/m)	APPROX WEIGHT (Kg)
80	203	200	330	275	8	50	24
100	229	220	355	300	9	60	29
150	267	285	450	395	13	100	55
200	292	340	540	485	17	150	82
250	330	405	645	590	21	265	125
300	356	460	715	660	25	380	177

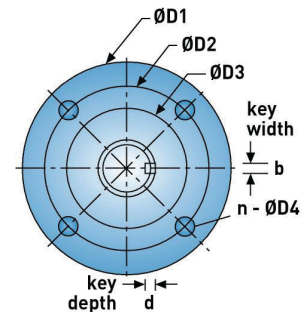
Dimensions in mm. Weights are approximate.



MOUNTING FLANGE												
	ØD	ØD1	ØD2	ØD3	ØD4	F	H	L	Y	b	d	n
F10	20	130	102	75	12	10	50	40	4	6	6	4
F14	30	175	140	105	19	10	60	50	5,5	8	7	4

Dimensions in mm. Weights are approximate.

F10: DN80, DN100, DN150  
F14: DN200, DN250, DN300



## OPTIONS AND ACCESSORIES

- Actuation: Electric or Pneumatic
- Gearboxes: Bevel or Spur
- By-pass
- Alternative flange drilling
- Torque Tubes

