



**SERIES F0 ANSI RANGE**

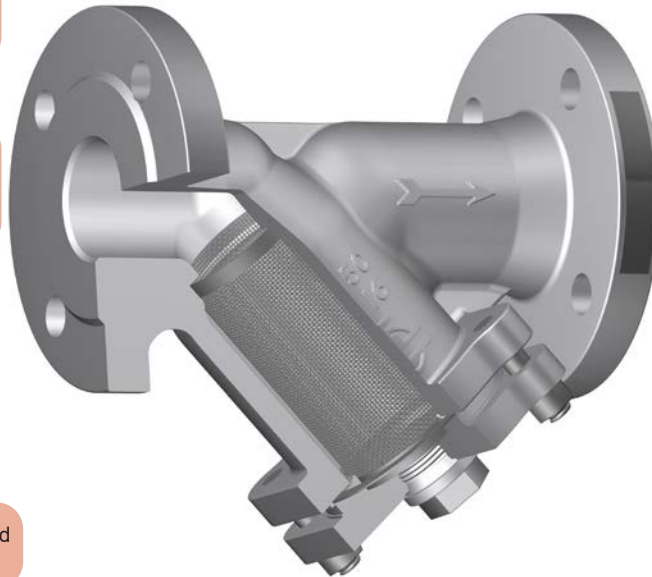
Y-Strainers are devices for mechanically removing solids from flowing media by means of a wired mesh or perforated basket, replaceable in line. They combine a rugged and compact design for indoors installation in industrial plants, building industry, etc.

St. steel screen, made out of high resistance wire, rugged and braided type or perforated basket

Precise machined seat slot, to accommodate the screen and avoid dirt to by-pass the strainer

Reinforced Graphite gasket, with. st. steel reinforcement

Standard gasket free threaded blow-off connection



Marking for identification and full traceability purpose

Great versatility in end connections, materials and configurations

Removable bolting cover, to ease maintenance

**Main Features / Reference Standards**

Design: ASME B16.34  
 Pressure Rating: 150/300/600#  
 Face to face length: ASME B16.10 and manufacturer standard  
 Valve end connections: Flanged RF or RTJ to ASME B16.5  
 Welded BW to ASME B16.25  
 Standard mesh width: 1 mm (DN50); 1,25 mm (DN80); 1,6 mm (DN100-DN300)  
 Marking: MSS SP-25  
 Inspections & Tests: API 598  
 Primer painted grey color similar to RAL 7037 for protection during storage and transport (carbon steel body/bonnet)  
 Product compliant with Directive 2014/68/EU on Pressure Equipment (PED) for European Union territory

**Main Duties / Limits of use**

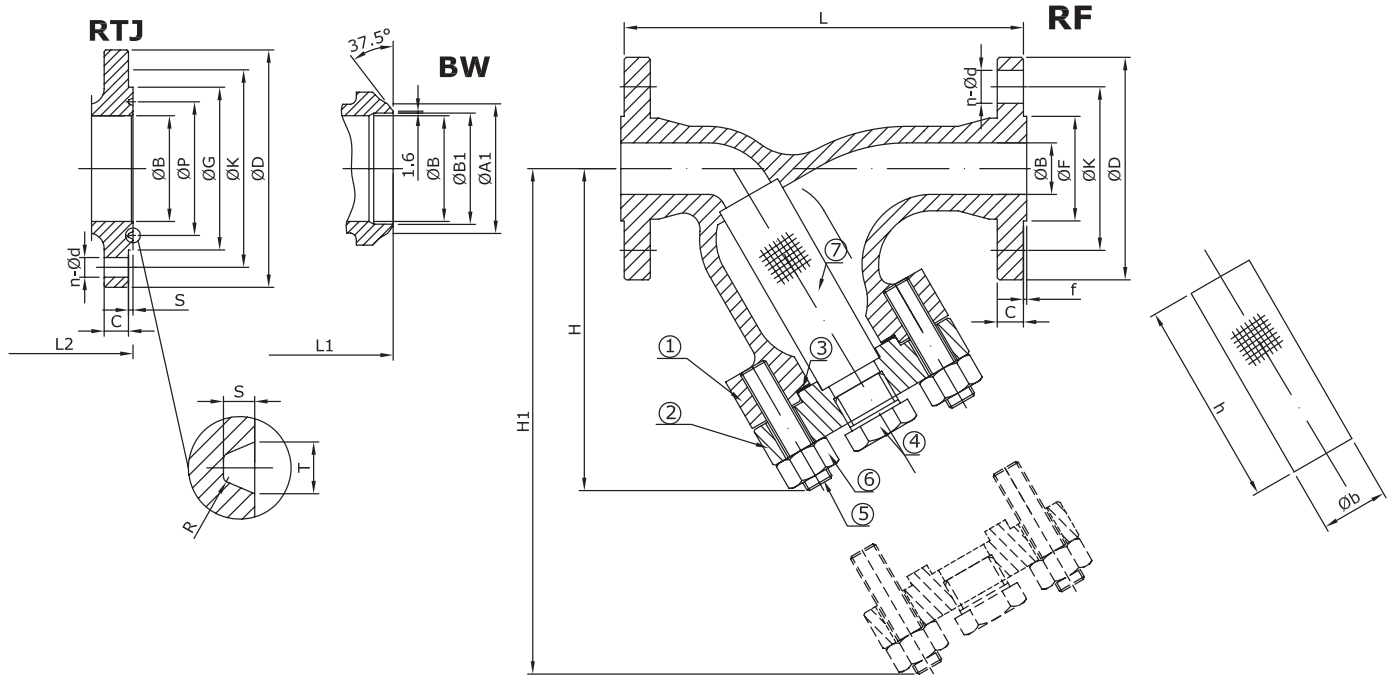
Fluids compatible with materials of construction. Questions referring to chemical resistance, please consult us  
 Pressure / Temperature Rating to ASME B16.34. See section "Engineering & Performance Data"  
 For products compliant with Directive 2014/68/EU, observe also limits acc. to Annex II tables 6 & 8 (gases & liquids group 1\*) and tables 7 & 9 (gases & liquids group 2\*) up to category III  
 \*Classification of fluids (group 1 or 2) acc. to Directive 2014/68/EU, Article 13

**Options**

Diverse materials of construction and trim combinations, special designs, pressure seal cover for high pressure, perforated or wire mesh, other mesh width, special mesh for vacuum service or in suction side of pumps, execution for aggressive atmosphere, compliance with NACE MR0175, etc. Please consult us

Main Parts and Materials

SERIES F0 ANSI RANGE  
Class 150,300&600



N°	Part name	A216 WCB (F0A0_)	A352 LCB/SS304 (F0A81_)	A352 LCB/SS304 (F0A80_)	A217 WC1 (F0B1_)	A217 WC6 (F0B8_)	A217 WC9 (F0B9_)
1	Body	A216 WCB	A352 LCB		A217 WC1	A217 WC6	A217 WC9
2	Cover	A105	A350 LF2		A182 F1	A182 F11	A182 F22
3	Gasket	SS304+Graphite	SS304+Graphite	SS316+Graphite	SS304+Graphite		
4	Drain Plug	A105	A350 LF2		A182 F304		
5	Cover Bolt (1)	A193 B7	A320 L7		A193 B16		
6	Cover Nut (1)	A194 2H	A194 4		A194 4		
7	Mesh	SS304	SS304	SS316	SS304		

(1) Bolting material for NACE MR0175 compliance available (i.e. B7M / 2HM for WCB bodies)

N°	Part name	A217 C5 (F0C2_)	A217 C12 (F0C4_)	CF8 (F0I2_)	CF8M (F0I0_)	CF3 (F0I1_)	CF3M (F0I7_)
1	Body	A217 C5	A217 C12	A351 CF8	A351 CF8M	A351 CF3	A351 CF3M
2	Cover	A182 F5	A182 F9	A182 F304	A182 F316	A182 F304L	A182 F316L
3	Gasket	SS304+Graphite		SS304+Graphite	SS316+Graphite	SS316+Graphite	SS316L+Graphite
4	Drain Plug	A182 F304		A182 F304	A182 F316	A182 F304L	A182 F316L
5	Cover Bolt	A193 B16		A193 B8	A193 B8M	A193 B8M	
6	Cover Nut	A194 4		A194 8	A194 8M	A194 8M	
7	Mesh	SS304		SS304	SS316	SS316	SS316L

Main Valve Parameters - Class 150

SERIES F0 ANSI RANGE



Nominal Size		inch	2"	2-1/2"	3"	4"	5"	6"	8"
DN			50	65	80	100	125	150	200
End connection	RF	L	203	-	241	292	-	406	495
		ØB	51	65	76	102	128	152	203
		ØD	150	180	190	230	255	280	345
		ØK	120,7	139,7	152,4	190,5	215,9	241,3	298,5
		ØF	92,1	104,8	127	157,2	185,7	215,9	269,9
		C	14,3	15,9	17,5	22,3	22,3	23,9	27
		f	2	2	2	2	2	2	2
		n-Ød	4 - 3/4	4 - 3/4	4 - 3/4	8 - 3/4	8 - 7/8	8 - 7/8	8 - 7/8
	BW	L1	229	-	318	368	-	470	597
		Schedule No.(1)	40	-	40	40	-	40	40
		ØB	51	65	76	102	128	152	203
		ØA1	60,3	-	91	117	-	172	223
		ØB1	52,48	-	78	102	-	154	203
	RTJ	L2	216	-	254	305	-	419	508
		ØB	51	65	76	102	128	152	203
		ØD	150	180	190	230	255	280	345
		ØK	120,7	139,7	152,4	190,5	215,9	241,3	298,5
		ØG	102	121	133	171	194	219	273
		ØP	82,55	101,6	114,3	149,23	171,45	193,68	247,65
		C	17,5	20,7	22,3	22,3	22,3	23,9	27
		n-Ød	4 - 3/4	4 - 3/4	4 - 3/4	8 - 3/4	8 - 7/8	8 - 7/8	8 - 7/8
		T	8,74	8,74	8,74	8,74	8,74	8,74	8,74
		S	6,35	6,35	6,35	6,35	6,35	6,35	6,35
		R	0,8	0,8	0,8	0,8	0,8	0,8	0,8
	H		140	177	205	245	294	330	400
	H1		270	330	375	440	532	600	735
	Plug (NPT)		1/2" NPT	3/4" NPT	3/4" NPT	3/4" NPT	3/4" NPT	3/4" NPT	3/4" NPT
Basket	h	110	127	140	165	204	232	285	
	ØB	50	64	75	98	128	150	193	
	Standard perforation	1	1,25	1,25	1,6	1,6	1,6	1,6	
Kvs-value		-	-	-	-	-	-	-	
Approx. Weight RF (2)		12	16	19	33	49	60	93	
Approx. Weight BW		9	12	13,6	24,6	38	47,04	71,4	

(1) Other schedule nos. on request  
 (2) RTJ weight increases approx. by 10%

Dimensions in mm (except for bolt holes - Ød -, which are in inch units) subject to manufacturing tolerance  
 Kvs-values in m³/h / Weights in kg  
 For more information about flanged and welded ends refer to page 16

Main Valve Parameters - Class 150

SERIES F0 ANSI RANGE



Nominal Size		inch	10"	12"	14"	16"	18"	20"	24"
		DN	250	300	350	400	450	500	600
End connection	RF	L	622	698	787	914	978	978	1067
		ØB	254	305	337	387	438	489	591
		ØD	405	485	535	595	635	700	815
		ØK	362	431,8	476,3	539,8	577,9	635	749,3
		ØF	323,8	381	412,8	469,9	533,4	584,2	692,2
		C	28,6	30,2	33,4	35	38,1	41,3	46,1
		f	2	2	2	2	2	2	2
		n-Ød	12 - 1	12 - 1	12 - 1 1/8	16 - 1 1/8	16 - 1 1/4	20 - 1 1/4	20 - 1 3/8
	BW	L1	673	775	787	914	978	978	1067
		Schedule No.(1)	40	STD	STD	STD	STD	STD	STD
		ØB	254	305	337	387	438	489	591
		ØA1	278	329	362	413	464	516	619
		ØB1	254,5	305	336,5	387,5	438	489	590,5
	RTJ	L2	635	711	800	927	991	991	1080
		ØB	254	305	337	387	438	489	591
		ØD	405	485	535	595	635	700	815
		ØK	362	431,8	476,3	539,8	577,9	635	749,3
		ØG	330	406	425	483	546	597	711
		ØP	304,8	381	396,88	454,03	517,53	558,8	673,1
		C	28,6	30,2	33,4	35	38,1	41,3	46,1
		n-Ød	12 - 1	12 - 1	12 - 1 1/8	16 - 1 1/8	16 - 1 1/4	20 - 1 1/4	20 - 1 3/8
		T	8,74	8,74	8,74	8,74	8,74	8,74	8,74
		S	6,35	6,35	6,35	6,35	6,35	6,35	6,35
		R	0,8	0,8	0,8	0,8	0,8	0,8	0,8
		H		475	540	600	675	720	790
	H1		850	1005	1090	1205	1320	1440	1700
	Plug (NPT)		3/4" NPT	3/4" NPT	3/4" NPT	1" NPT	1" NPT	1" NPT	1" NPT
	Basket	h	322	405	430	470	530	585	680
ØB		240	280	328	362	413	458	558	
Standard perforation		1,6	1,6	(3)	(3)	(3)	(3)	(3)	
Kvs-value		-	-	-	-	-	-	-	
Approx. Weight RF (2)		144	267	331	450	650	713	990	
Approx. Weight BW		115,2	222,6	274,6	380,4	573,2	620,6	848,4	

- (1) Other schedule nos. on request
- (2) RTJ weight increases approx. by 10%
- (3) To be determined

Dimensions in mm (except for bolt holes - Ød -, which are in inch units) subject to manufacturing tolerance  
Kvs-values in m³/h / Weights in kg

For more information about flanged and welded ends refer to page 16



Main Valve Parameters - Class 300

Nominal Size		inch	2"	2-1/2"	3"	4"	5"	6"	8"	
		DN	50	65	80	100	125	150	200	
End connection	RF	L	267	-	318	356	-	444	559	
		ØB	51	65	76	102	128	152	203	
		ØD	165	190	210	255	280	320	380	
		ØK	127	149,2	168,3	200	235	269,9	330,2	
		ØF	92,1	104,8	127	157,2	185,7	215,9	269,9	
		C	20,7	23,9	27	30,2	33,4	35	39,7	
		f	2	2	2	2	2	2	2	
		n-Ød	8 - 3/4	8 - 7/8	8 - 7/8	8 - 7/8	8 - 7/8	8 - 7/8	12 - 7/8	12 - 1
	BW	L1	267	-	318	356	-	444	533	
		Schedule No.(1)	40	-	40	40	-	40	40	
		ØB	51	65	76	102	128	152	203	
		ØA1	60,3	-	91	117	-	172	223	
		ØB1	52,48	-	78	102	-	154	203	
	RTJ	L2	283	-	334	372	-	460	575	
		ØB	51	65	76	102	128	152	203	
		ØD	165	190	210	255	280	320	380	
		ØK	127	149,2	168,3	200	235	269,9	330,2	
		ØG	108	127	146	175	210	241	302	
		ØP	82,55	101,6	123,83	149,23	180,98	211,12	269,88	
		C	20,7	23,9	27	30,2	33,4	35	39,7	
		n-Ød	8 - 3/4	8 - 7/8	8 - 7/8	8 - 7/8	8 - 7/8	8 - 7/8	12 - 7/8	12 - 1
		T	11,91	11,91	11,91	11,91	11,91	11,91	11,91	11,91
		S	7,92	7,92	7,92	7,92	7,92	7,92	7,92	7,92
		R	0,8	0,8	0,8	0,8	0,8	0,8	0,8	0,8
	H		170	210	240	280	326	360	430	
	H1		305	365	410	470	562	630	770	
	Plug (NPT)		1/2" NPT	3/4" NPT	3/4" NPT	3/4" NPT	3/4" NPT	3/4" NPT	3/4" NPT	
Basket	h	140	160	175	195	232	260	315		
	ØB	50	64	75	98	128	150	193		
	Standard perforation	1	1,25	1,25	1,6	1,6	1,6	1,6		
Kvs-value		-	-	-	-	-	-	-		
Approx. Weight RF (2)		16	26	33	46	71	89	153		
Approx. Weight BW		11,2	19	24,6	32,8	52	66,2	117		

(1) Other schedule nos. on request  
 (2) RTJ weight increases approx. by 10%

Dimensions in mm (except for bolt holes - Ød -, which are in inch units) subject to manufacturing tolerance  
 Kvs-values in m³/h / Weights in kg  
 For more information about flanged and welded ends refer to page 16



Main Valve Parameters - Class 300

Nominal Size		inch	10"	12"	14"	16"	18"	20"	24"
DN			250	300	350	400	450	500	600
End connection	RF	L	622	711	838	863	977	1016	1346
		ØB	254	305	337	387	432	483	584
		ØD	445	520	585	650	710	775	915
		ØK	387,4	450,8	514,4	571,5	628,6	685,8	812,8
		ØF	323,8	381	412,8	469,9	533,4	584,2	692,2
		C	46,1	49,3	52,4	55,6	58,8	62	68,3
		f	2	2	2	2	2	2	2
		n-Ød	16 - 1 1/8	16 - 1 1/4	20 - 1 1/4	20 - 1 3/8	24 - 1 3/8	24 - 1 3/8	24 - 1 5/8
	BW	L1	622	711	838	864	978	1016	1346
		Schedule No.(1)	40	STD	STD	STD	STD	STD	STD
		ØB	254	305	337	387	432	483	584
		ØA1	278	329	362	413	464	516	619
		ØB1	254,5	305	336,5	387,5	438	489	590,5
	RTJ	L2	638	727	854	879	993	1035	1368
		ØB	254	305	337	387	432	483	584
		ØD	445	520	585	650	710	775	915
		ØK	387,4	450,8	514,4	571,5	628,6	685,8	812,8
		ØG	356	413	457	508	575	635	749
		ØP	323,85	981	419,1	469,9	533,4	584,2	692,15
		C	46,1	49,3	52,4	55,6	58,8	62	68,3
		n-Ød	16 - 1 1/8	16 - 1 1/4	20 - 1 1/4	20 - 1 3/8	24 - 1 3/8	24 - 1 3/8	24 - 1 5/8
		T	11,91	11,91	11,91	11,91	11,91	13,49	16,66
		S	7,92	7,92	7,92	7,92	7,92	9,53	11,13
		R	0,8	0,8	0,8	0,8	0,8	1,5	1,5
	H		510	575	630	705	750	830	1020
	H1		875	1030	1120	1235	1350	1470	1735
	Plug (NPT)		3/4" NPT	3/4" NPT	3/4" NPT	1" NPT	1" NPT	1" NPT	1" NPT
Basket	h	355	435	460	505	560	615	715	
	ØB	240	280	328	362	413	458	558	
	Standard perforation	1,6	1,6	(3)	(3)	(3)	(3)	(3)	
Kvs-value		-	-	-	-	-	-	-	
Approx. Weight RF (2)		262	400	485	570	750	920	1104	
Approx. Weight BW		212,8	325,6	384,2	436,8	584,4	714,8	807,6	

(1) Other schedule nos. on request  
 (2) RTJ weight increases approx. by 10%  
 (3) To be determined

Dimensions in mm (except for bolt holes - Ød -, which are in inch units) subject to manufacturing tolerance  
 Kvs-values in m³/h / Weights in kg  
 For more information about flanged and welded ends refer to page 16



Main Valve Parameters - Class 600

SERIES F0 ANSI RANGE

Nominal Size		inch	2"	2-1/2"	3"	4"	5"	6"	8"
		DN	50	65	80	100	125	150	200
End connection	RF	L	292	-	356	432	-	559	660
		ØB	51	65	76	102	128	152	200
		ØD	165	190	210	275	330	355	420
		ØK	127	149,2	168,3	215,9	266,7	292,1	349,2
		ØF	92,1	104,8	127	157,2	185,7	215,9	269,9
		C	25,4	28,6	31,8	38,1	44,5	47,7	55,6
		f	7	7	7	7	7	7	7
		n-Ød	8 - 3/4	8 - 7/8	8 - 7/8	8 - 1	8 - 1 1/8	12 - 1 1/8	12 - 1/4
	BW	L1	292	-	356	432	-	559	660
		Schedule No.(1)	80	-	80	80	-	80	80
		ØB	51	65	76	102	128	152	200
		ØA1	60,3	-	91	117	-	172	223
		ØB1	49,22	-	73,5	97	-	146,5	193,5
	RTJ	L2	295	-	359	435	-	562	663
		ØB	51	65	76	102	128	152	200
		ØD	165	190	210	275	330	355	420
		ØK	127	149,2	168,3	215,9	266,7	292,1	349,2
		ØG	108	127	146	175	210	241	302
		ØP	82,55	101,6	123,83	149,23	180,98	211,12	269,88
		C	25,4	28,6	31,8	38,1	44,5	47,7	55,6
		n-Ød	8 - 3/4	8 - 7/8	8 - 7/8	8 - 1	8 - 1 1/8	12 - 1 1/8	12 - 1/4
		T	11,91	11,91	11,91	11,91	11,91	11,91	11,91
		S	7,92	7,92	7,92	7,92	7,92	7,92	7,92
		R	0,8	0,8	0,8	0,8	0,8	0,8	0,8
	H		205	248	280	320	363	395	465
	H1		340	400	445	510	599	665	805
	Plug (NPT)		1/2" NPT	3/4" NPT	3/4" NPT	3/4" NPT	3/4" NPT	3/4" NPT	3/4" NPT
Basket	h	170	193	210	225	262	290	345	
	ØB	50	64	75	98	128	150	193	
	Standard perforation	1	1,25	1,25	1,6	1,6	1,6	1,6	
Kvs-value		-	-	-	-	-	-	-	
Approx. Weight RF (2)		19,5	31	39	68	135	185	275	
Approx. Weight BW		12,9	21	26,4	45,2	100	140,6	211,4	

(1) Other schedule nos. on request  
 (2) RTJ weight increases approx. by 10%

Dimensions in mm (except for bolt holes - Ød -, which are in inch units) subject to manufacturing tolerance  
 Kvs-values in m³/h / Weights in kg  
 For more information about flanged and welded ends refer to page 16



Main Valve Parameters - Class 600

SERIES F0 ANSI RANGE

Nominal Size		inch	10"	12"	14"	16"	18"	20"	24"
		DN	250	300	350	400	450	500	600
End connection	RF	L	787	838	889	991	1092	1194	1397
		ØB	248	299	327	375	419	464	559
		ØD	510	560	605	685	745	815	940
		ØK	431,8	489	527	603,2	654	723,9	838,2
		ØF	323,8	381	412,8	469,9	533,4	584,2	692,2
		C	63,5	66,7	69,9	76,2	82,6	88,9	101,6
		f	7	7	7	7	7	7	7
		n-Ød	16 - 1 3/8	20 - 1 3/8	20 - 1 1/2	20 - 1 5/8	20 - 1 3/4	24 - 1 3/4	24 - 2
	BW	L1	787	838	889	991	1092	1194	1397
		Schedule No.(1)	80	80	80	80	80	80	80
		ØB	248	299	327	375	419	464	559
		ØA1	278	329	362	413	464	516	619
		ØB1	243	289	317,5	363,5	409,5	455,5	547,5
	RTJ	L2	790	841	892	994	1095	1200	1407
		ØB	248	299	327	375	419	464	559
		ØD	510	560	605	685	745	815	940
		ØK	431,8	489	527	603,2	654	723,9	838,2
		ØG	356	413	457	508	575	635	749
		ØP	323,85	981	419,1	469,9	533,4	584,2	692,15
		C	63,5	66,7	69,9	76,2	82,6	88,9	101,6
		n-Ød	16 - 1 3/8	20 - 1 3/8	20 - 1 1/2	20 - 1 5/8	20 - 1 3/4	24 - 1 3/4	24 - 2
		T	11,91	11,91	11,91	11,91	11,91	13,49	16,66
		S	7,92	7,92	7,92	7,92	7,92	9,53	11,13
		R	0,8	0,8	0,8	0,8	0,8	1,5	1,5
	H		550	615	660	740	785	870	1060
	H1		910	1065	1150	1270	1385	1505	1770
	Plug (NPT)		3/4" NPT	3/4" NPT	3/4" NPT	1" NPT	1" NPT	1" NPT	1" NPT
Basket	h	385	475	490	540	595	650	755	
	ØB	240	280	328	362	413	458	558	
	Standard perforation	1,6	1,6	(3)	(3)	(3)	(3)	(3)	
Kvs-value		-	-	-	-	-	-	-	
Approx. Weight RF (2)		410	500	620	775	870	1050	1340	
Approx. Weight BW		306,8	377,6	440	547	582	696	902	

(1) Other schedule nos. on request  
 (2) RTJ weight increases approx. by 10%  
 (3) To be determined

Dimensions in mm (except for bolt holes - Ød -, which are in inch units) subject to manufacturing tolerance  
 Kvs-values in m³/h / Weights in kg  
 For more information about flanged and welded ends refer to page 16